

نحن نصلك بالعالم  
We Connect You To The World  
#SharjahAirport

Reaching 16m\* people  
traveling to/from the UAE



**Sharjah International Airport** is the third largest airport in the UAE and one of the quickest growing airports in the Middle East. With 57 airlines flying to and from 153+ destinations, in over 32 countries, Sharjah is in an ideal location between Dubai and the Northern Emirates and is ranked #3 in the UAE.



Advertising opportunities vary from custom built static and digital OOH displays integrated into the airport architecture, to opportunities for activations and events. We can create tailor made solutions and turn your brand's airport advertising into a unique showcase to over 16m\* people.

\*Estimated growth for 2023 – 13.08m in 2022



# PASSENGER & AIRPORT HIGHLIGHTS



## HIGHLIGHTS



3h. Dwell time



Captive Audience with 100% engagement



Receptive mindset



Direct influence from conversion to purchase

**13.08 MILLION**

passengers recorded in 2022 and expected to increase by 32% (16m\*) in 2023  
+87% increase vs 2021

### AIRPORT STATS:

Originating flights: 98.2%

International: 63%

GCC: 37%

# PASSENGER DEMOGRAPHICS



Leaders & C-Level

6%

Leaders & Top management in government & private sector co.



Tech Savvy

9%

Adopt new tech, always online, heavily invested in social media



Millennial Execs

11%

Young professionals in junior roles



Execs / Young Jetsetters

12%

Travel twice a year, enjoy shopping & entertainment



Tourists

22%

Tourists from all over visit Sharjah to get to see the UAE



Middle & Working Class  
(White Collar & Blue Collar)

40%

Working Class white & blue collar residents frequently use SIA

# PASSENGER DEMOGRAPHICS

**87%**

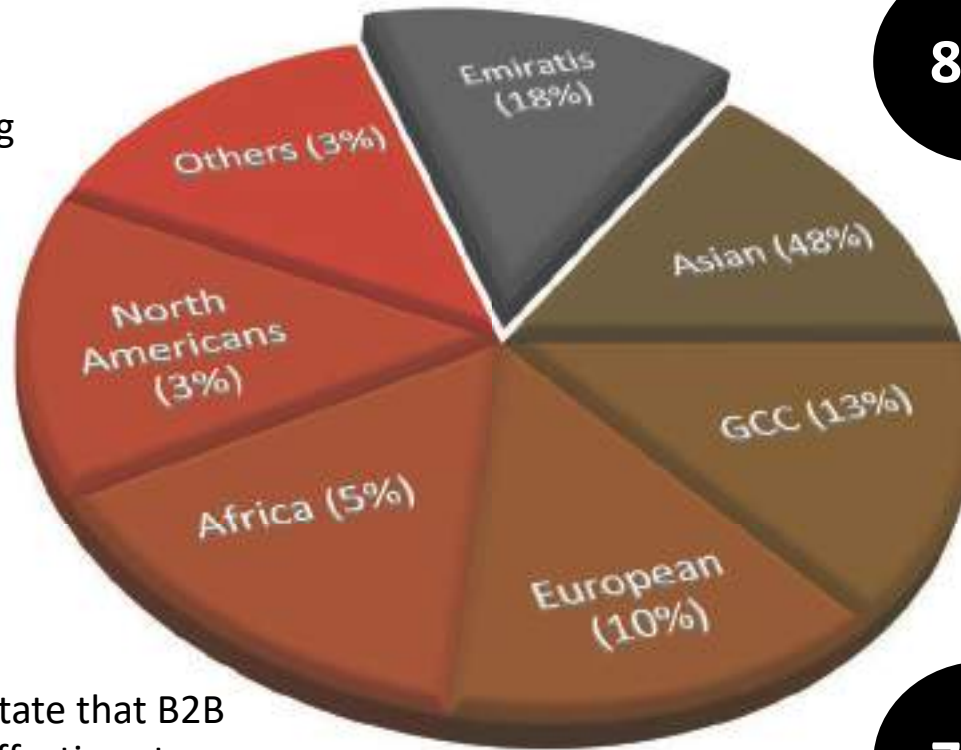
GCC Nationals pay attention to advertising while travelling

**22%**

are tourists visiting the UAE

**72%**

of business travellers state that B2B airport advertising is effective at reaching people like them



**89%**

GCC travelers state that advertising helps them know what's available

**31%**

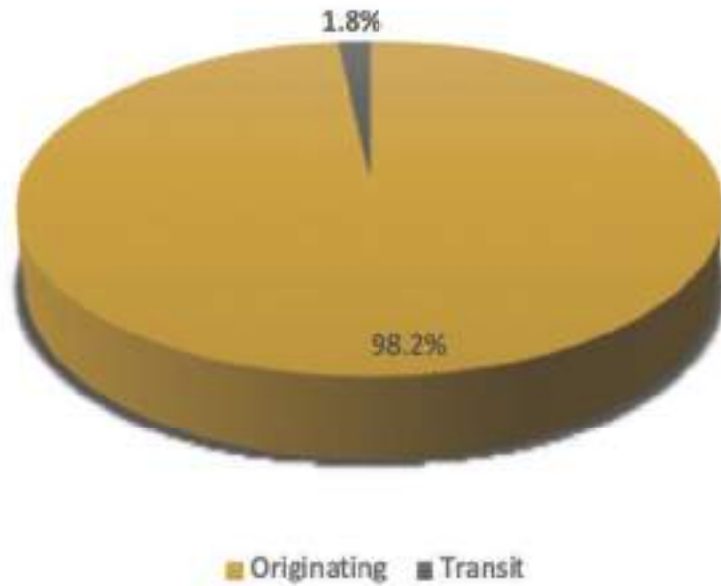
Above average income of the local population held by International passengers

**71%**

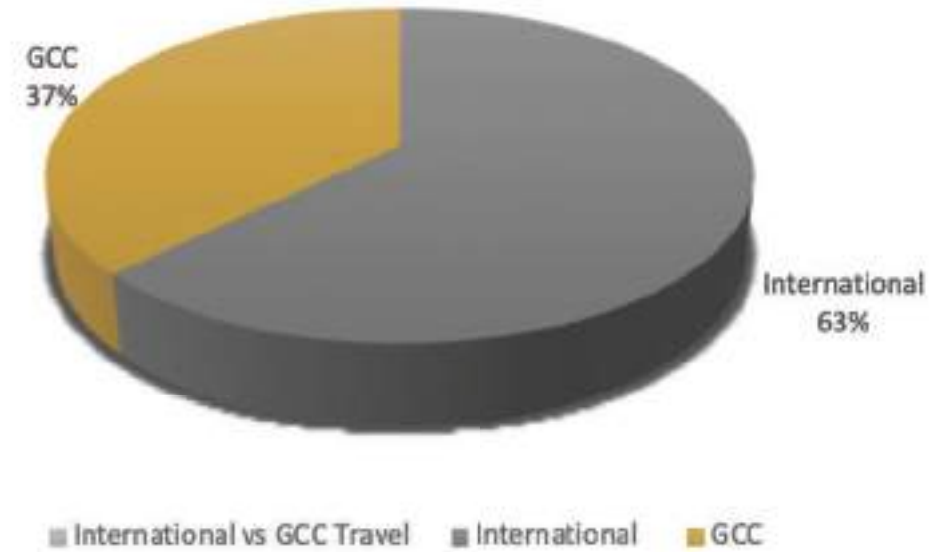
of air travelers are engaged with airport advertising, offering brands great opportunities

# AIRPORT STATS

## Key Figures for Departures



## International vs GCC Travel



# PASSENGER NUMBERS EVOLUTION



## TRAVELLERS FROM UAE

|                    |     |
|--------------------|-----|
| ABU DHABI & AL AIN | 12% |
| DUBAI              | 40% |
| SHARJAH & NE       | 48% |

# NETWORK ADVERTISING AT SHARJAH INTERNATIONAL AIRPORT

## SIA - DEPARTURES

Airport advertising drives brand awareness, consideration and intent among air travelers\*.

A spectacular array of large format assets spread across the entire departure journey at key touchpoints targeting all outgoing passengers, estimated to be approx. 7.5m in 2023.

34 advertising displays strategically considered by measuring average walking speed across the entire departure concourse to ensure total visibility for brands, products or services. SIA offer a myriad of advertising opportunities. From a single tactical concept to an assorted network of displays – SIA offers the whole nine yards.

6 Zones have been earmarked from entering the departure gates to check-in, Immigration, the Departure Concourse where high end retail stores and waiting areas are the last stop before boarding.

A captive environment, extensive dwell time, large format media to engage decision makers with purchasing power to connect with their brand – advertise nows

\*Source: Nielsen Airport Insights Study

# ADVERTISING PACKAGES

## TITANIUM - Departures Domination

The entire passenger departure journey  
A network of 14 advertising displays reaching all departing passengers  
across their journey from from check-in to boarding

## GOLD - Departures Impact

Passenger departure journey in most key locations.  
A network of 8 advertising displays reaching all departing passengers  
across their journey from from check-in to boarding

## SILVER - Departures Catch

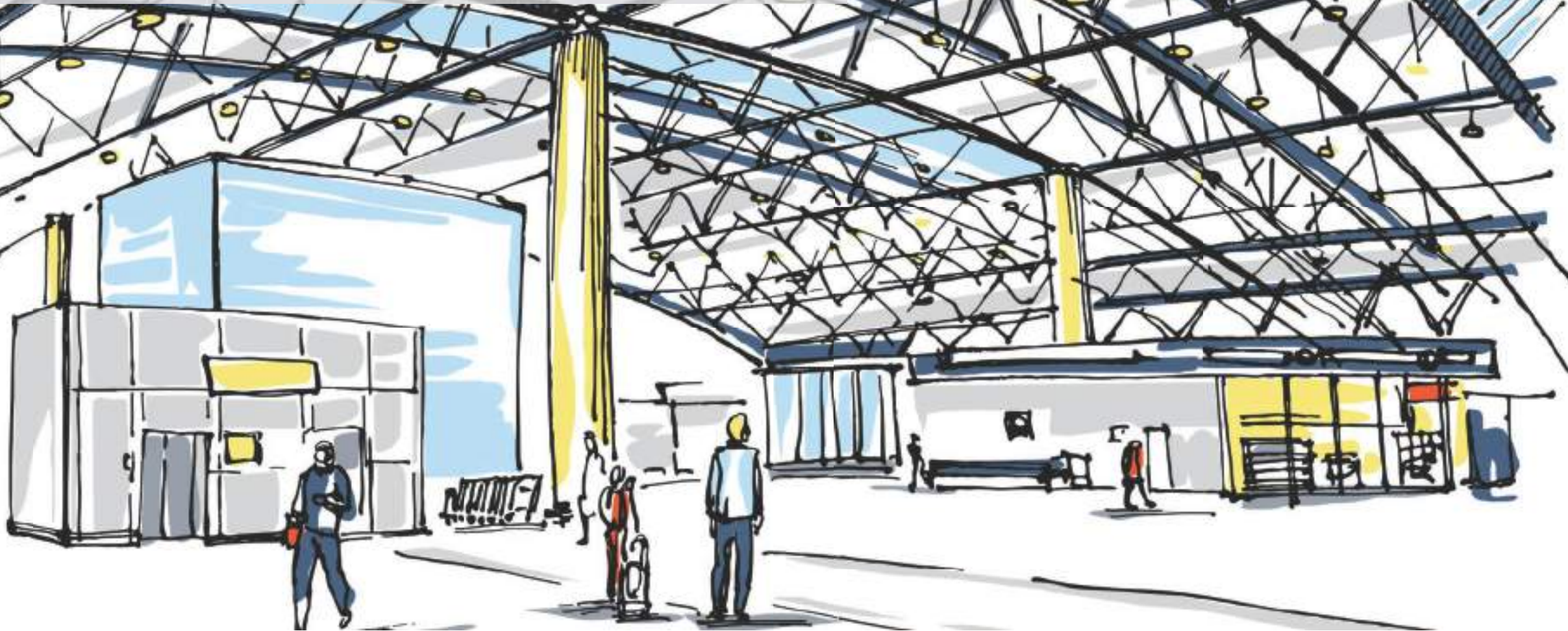
Passenger departure journey in a few key locations.  
A network of 3 advertising displays reaching departing passengers  
across their journey from from check-in to boarding

## STAND ALONE - Departures ad hoc

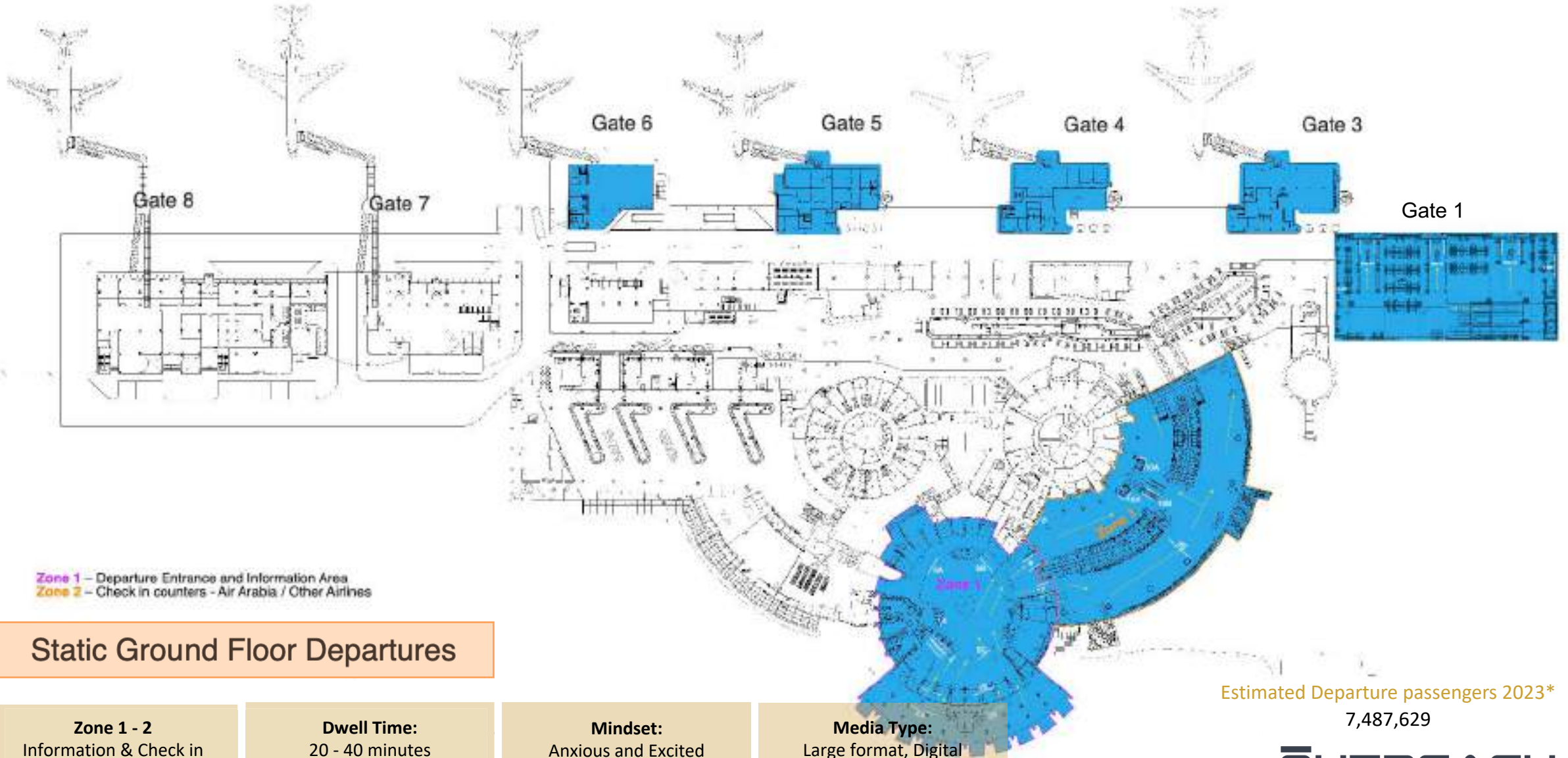
Stand alone advertising displays across the SIA departures network



# SHARJAH INTERNATIONAL AIRPORT CUSTOMER JOURNEY : DEPARTURES



# DEPARTURES CUSTOMER JOURNEY: ZONE 1 - 2



## Static Ground Floor Departures

**Zone 1 - 2**  
Information & Check in

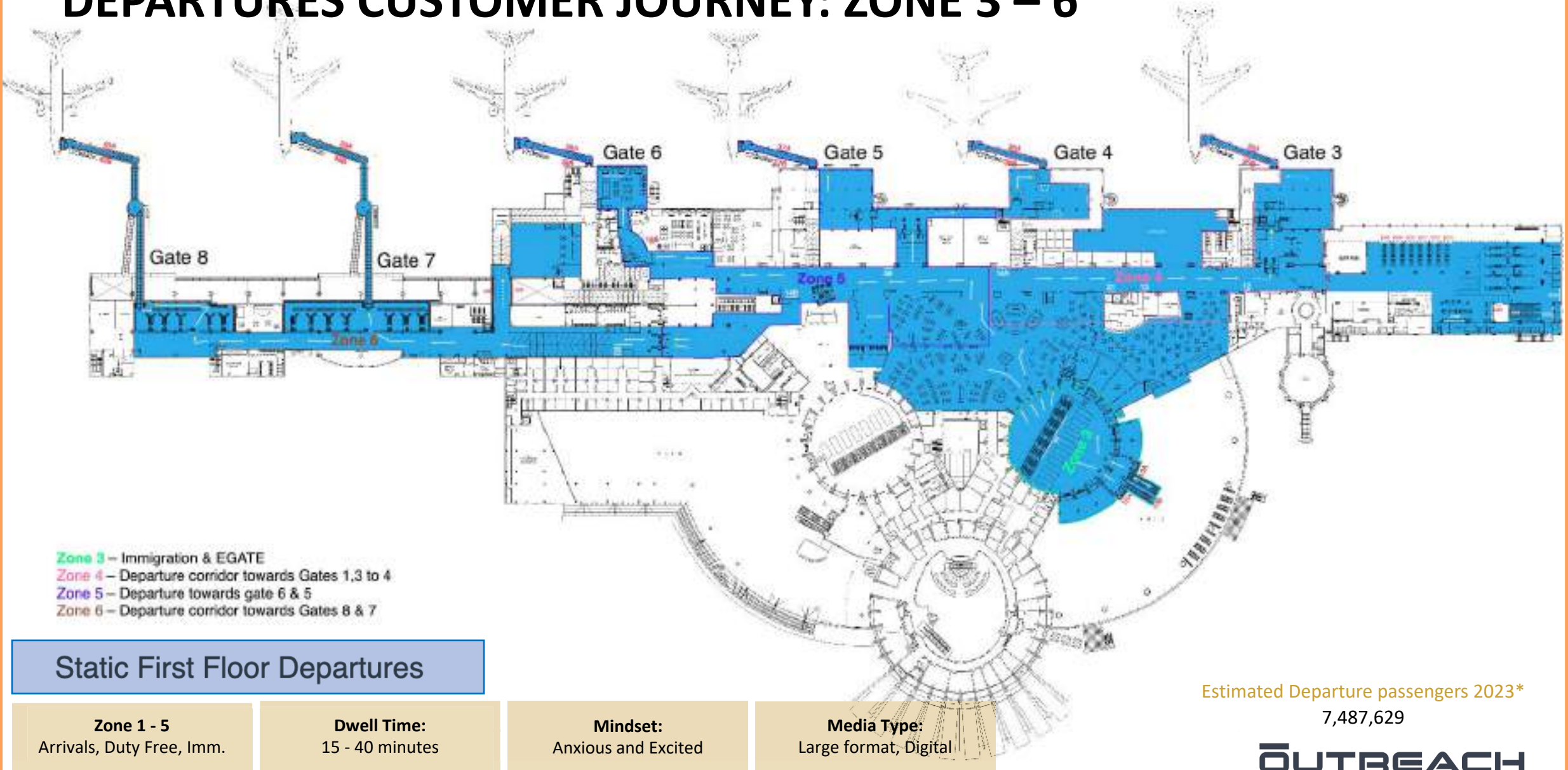
**Dwell Time:**  
20 - 40 minutes

**Mindset:**  
Anxious and Excited

**Media Type:**  
Large format, Digital

Estimated Departure passengers 2023\*  
7,487,629

# DEPARTURES CUSTOMER JOURNEY: ZONE 3 – 6



## Static First Floor Departures

**Zone 1 - 5**  
Arrivals, Duty Free, Imm.

**Dwell Time:**  
15 - 40 minutes

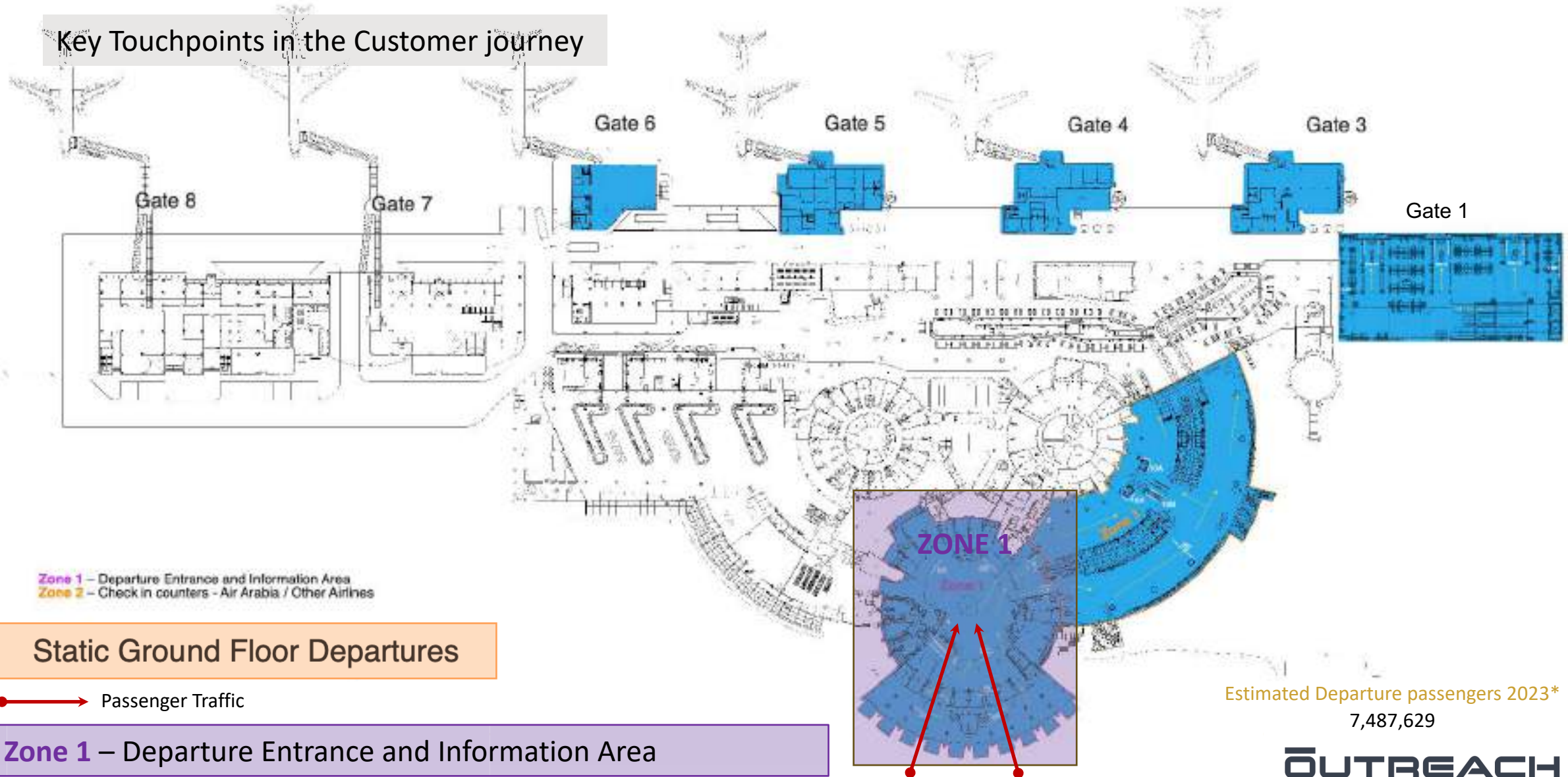
**Mindset:**  
Anxious and Excited

**Media Type:**  
Large format, Digital

Estimated Departure passengers 2023\*  
7,487,629

# DEPARTURES CUSTOMER JOURNEY: ZONE 1

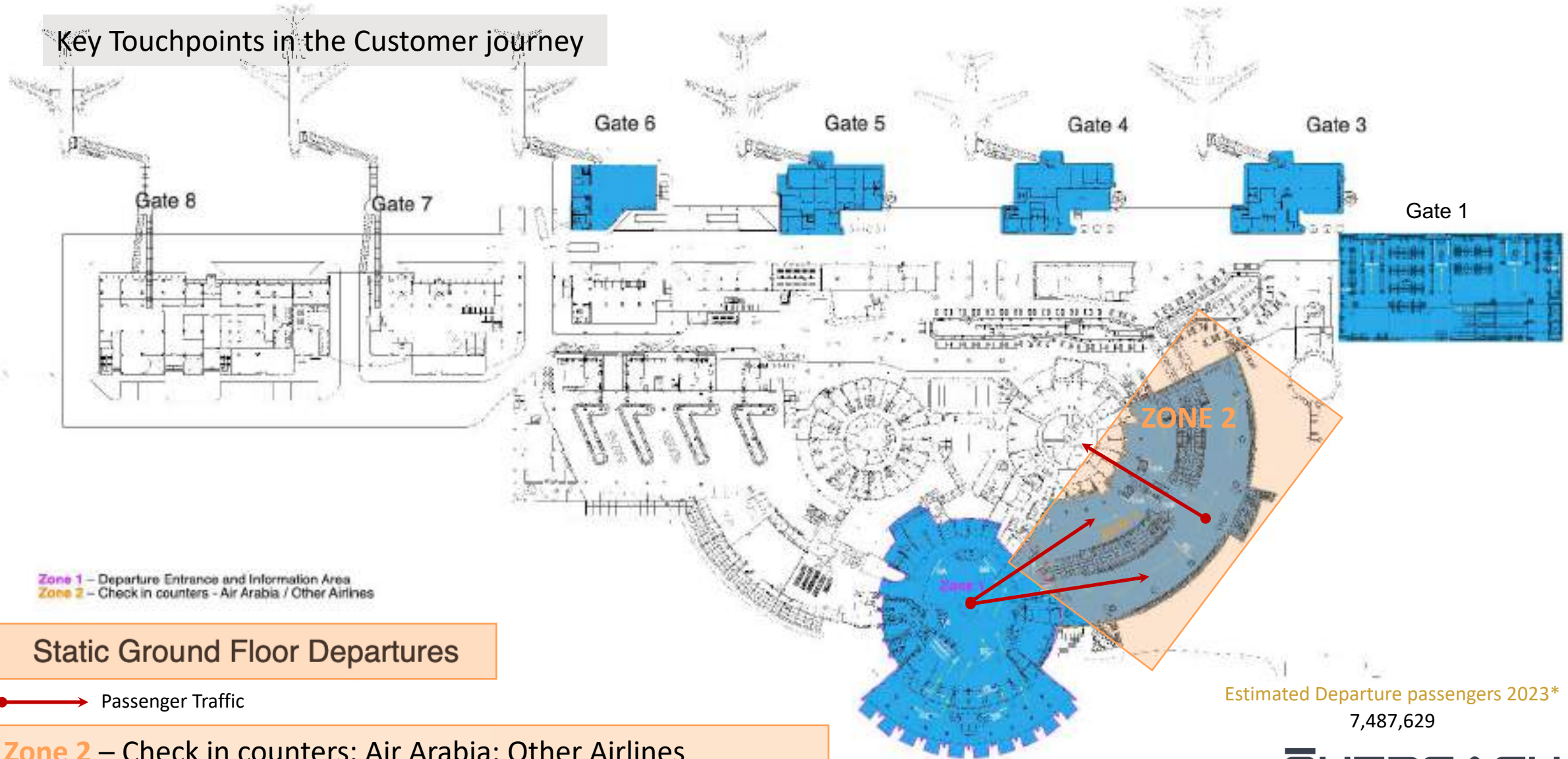
Key Touchpoints in the Customer journey



Estimated Departure passengers 2023\*  
7,487,629

# DEPARTURES CUSTOMER JOURNEY: ZONE 2

Key Touchpoints in the Customer journey



Zone 1 – Departure Entrance and Information Area  
Zone 2 – Check in counters - Air Arabia / Other Airlines

## Static Ground Floor Departures

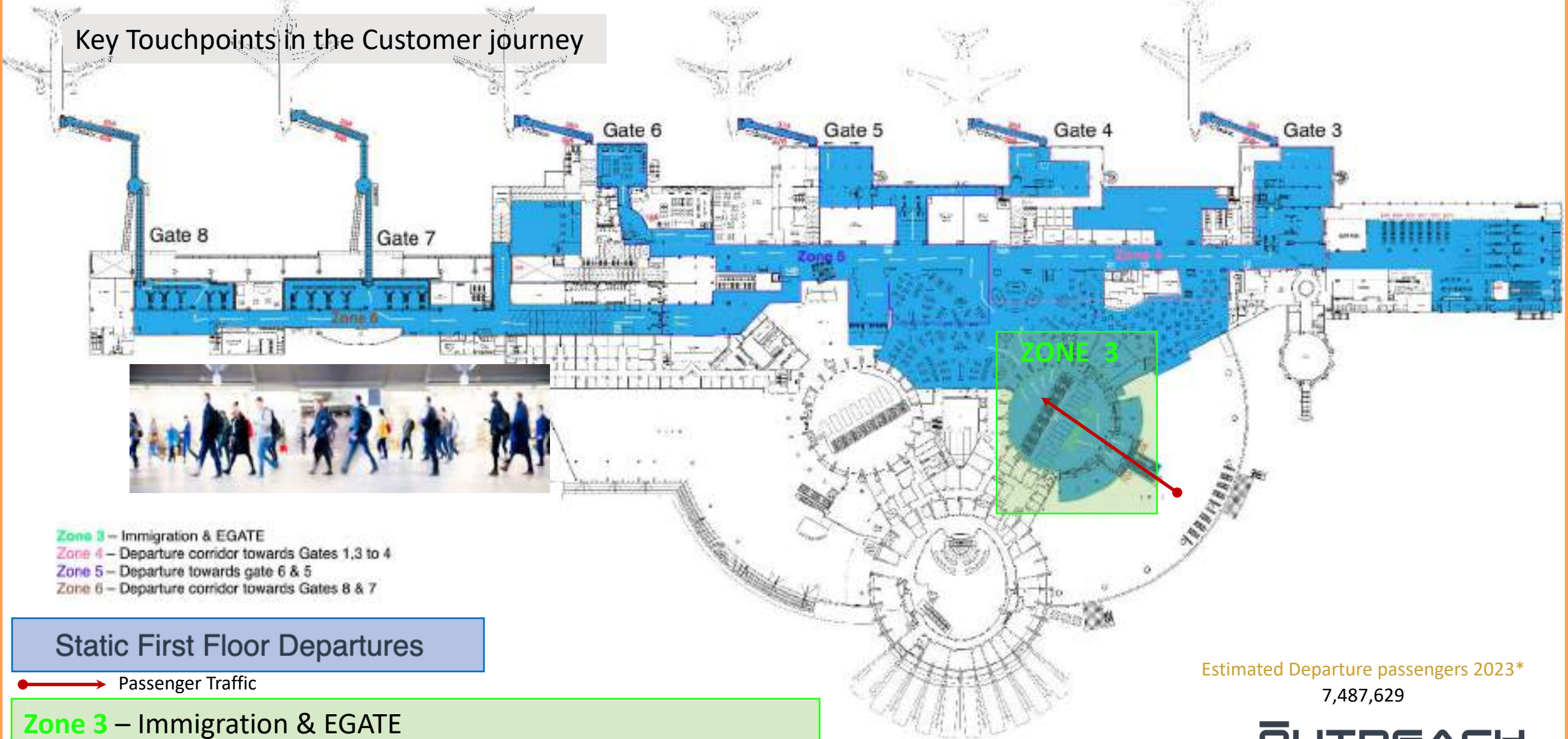
→ Passenger Traffic

Zone 2 – Check in counters: Air Arabia; Other Airlines

Estimated Departure passengers 2023\*  
7,487,629

# DEPARTURES CUSTOMER JOURNEY: ZONE 3

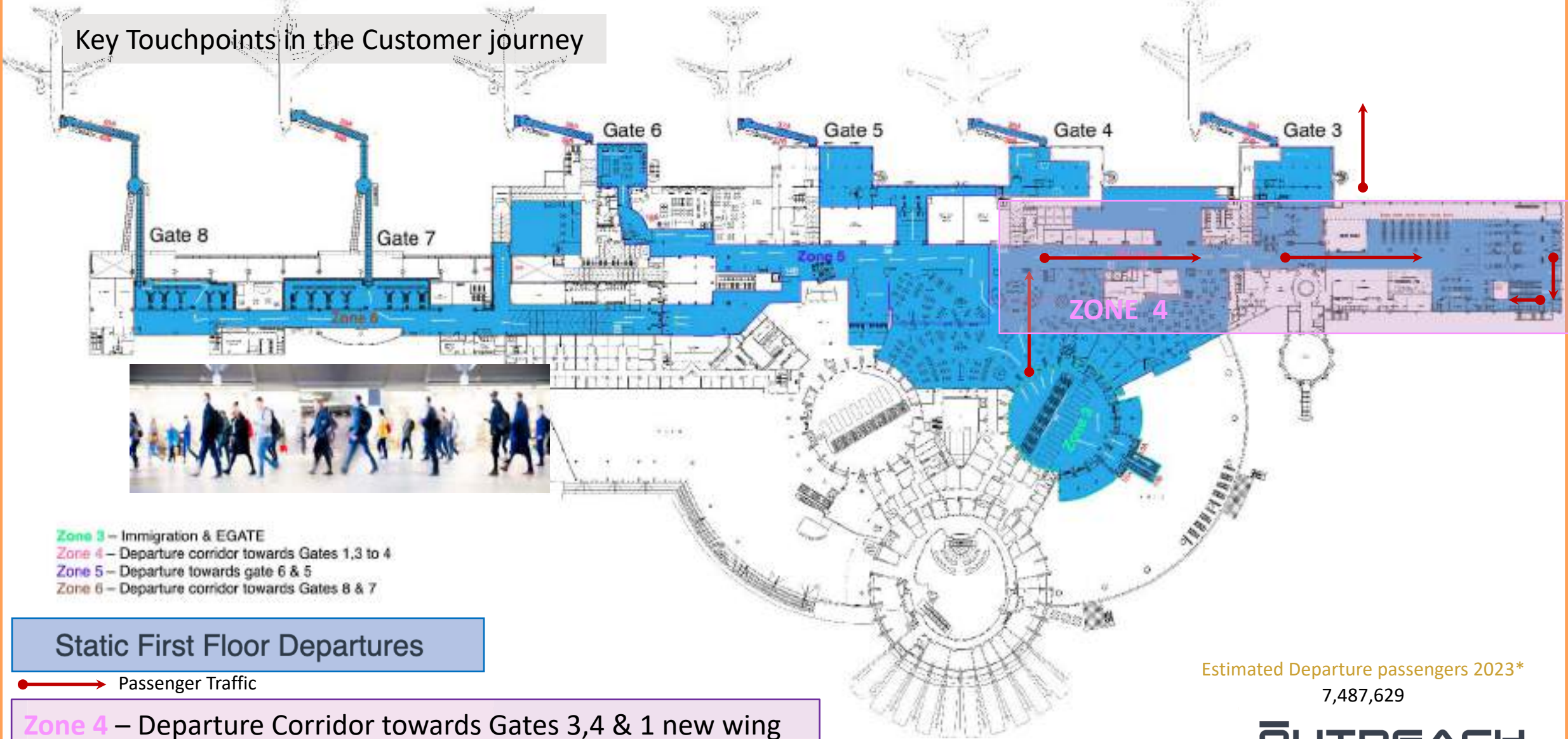
Key Touchpoints in the Customer journey



Estimated Departure passengers 2023\*  
7,487,629

# DEPARTURES CUSTOMER JOURNEY: ZONE 4

Key Touchpoints in the Customer journey



- Zone 3 – Immigration & EGATE
- Zone 4 – Departure corridor towards Gates 1,3 to 4
- Zone 5 – Departure towards gate 6 & 5
- Zone 6 – Departure corridor towards Gates 8 & 7

Static First Floor Departures

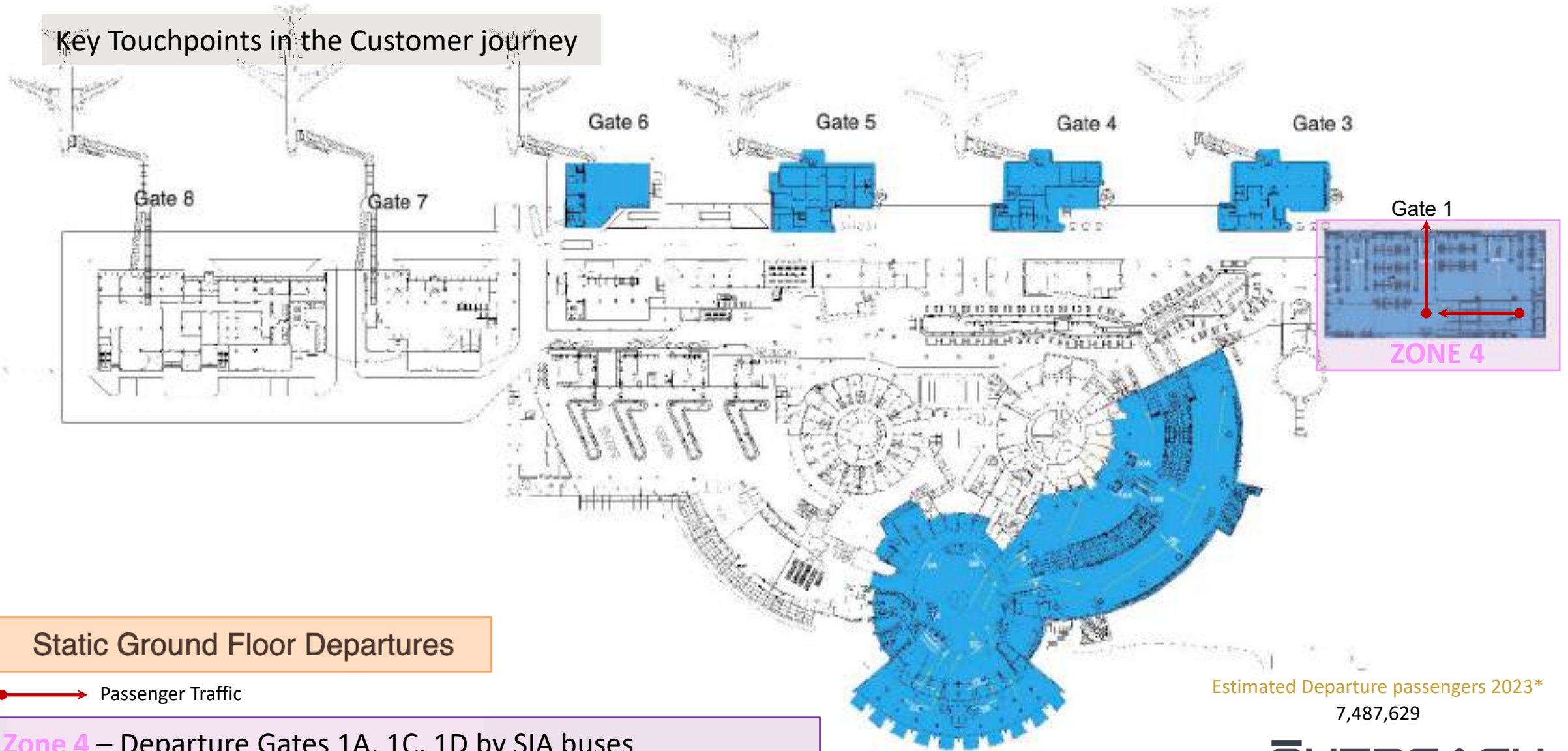
➔ Passenger Traffic

Zone 4 – Departure Corridor towards Gates 3,4 & 1 new wing

Estimated Departure passengers 2023\*  
7,487,629

# DEPARTURES CUSTOMER JOURNEY: ZONE 4

Key Touchpoints in the Customer journey

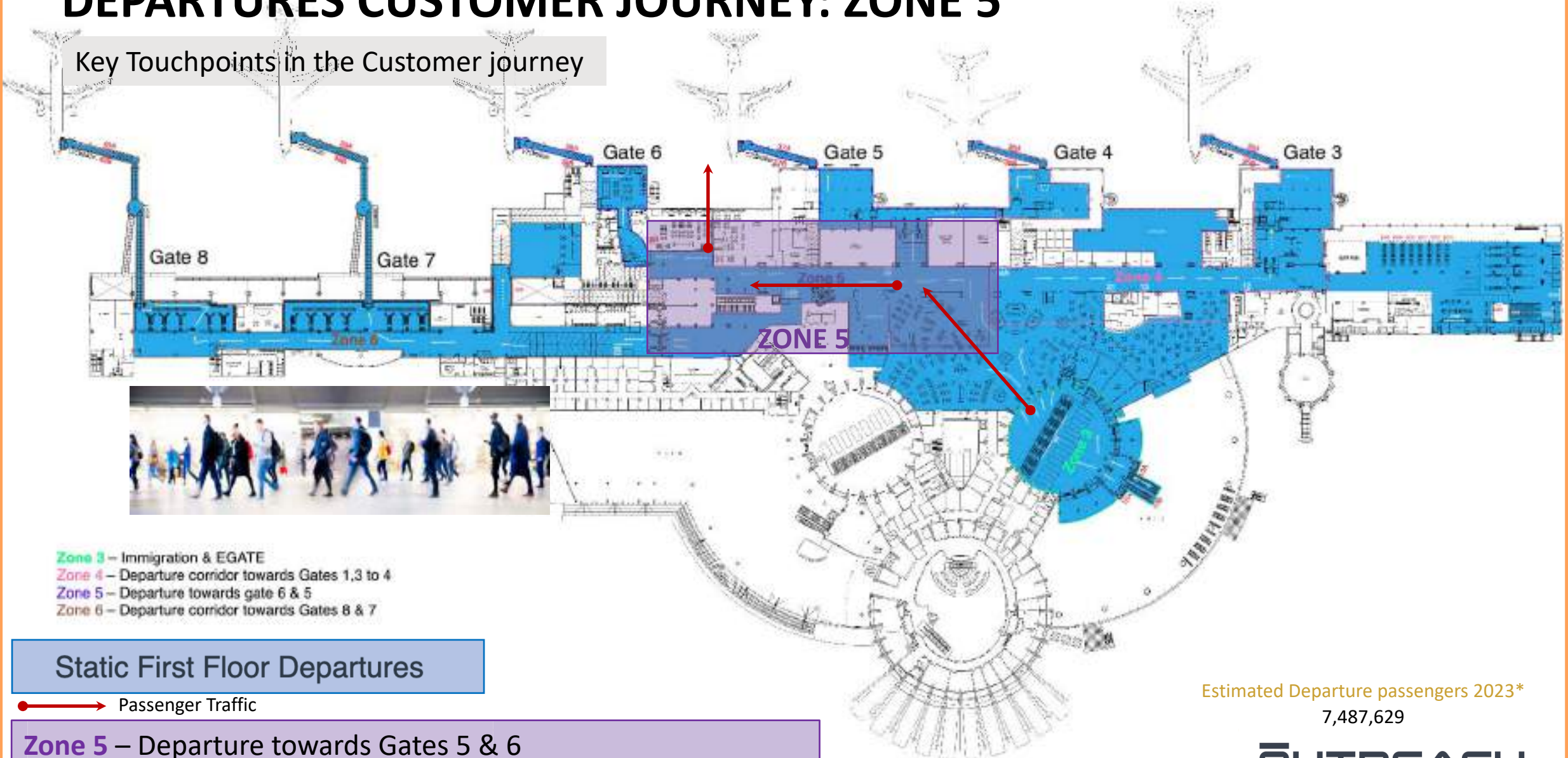


Estimated Departure passengers 2023\*  
7,487,629



# DEPARTURES CUSTOMER JOURNEY: ZONE 5

Key Touchpoints in the Customer journey



- Zone 3 – Immigration & EGATE
- Zone 4 – Departure corridor towards Gates 1,3 to 4
- Zone 5 – Departure towards gate 6 & 5
- Zone 6 – Departure corridor towards Gates 8 & 7

Static First Floor Departures

➔ Passenger Traffic

Zone 5 – Departure towards Gates 5 & 6

Estimated Departure passengers 2023\*  
7,487,629

# DEPARTURES CUSTOMER JOURNEY: ZONE 6

Key Touchpoints in the Customer journey



- Zone 3 – Immigration & EGATE
- Zone 4 – Departure corridor towards Gates 1,3 to 4
- Zone 5 – Departure towards gate 6 & 5
- Zone 6 – Departure corridor towards Gates 8 & 7

## Static First Floor Departures

→ Passenger Traffic

**Zone 6** – Immigration & EGATE

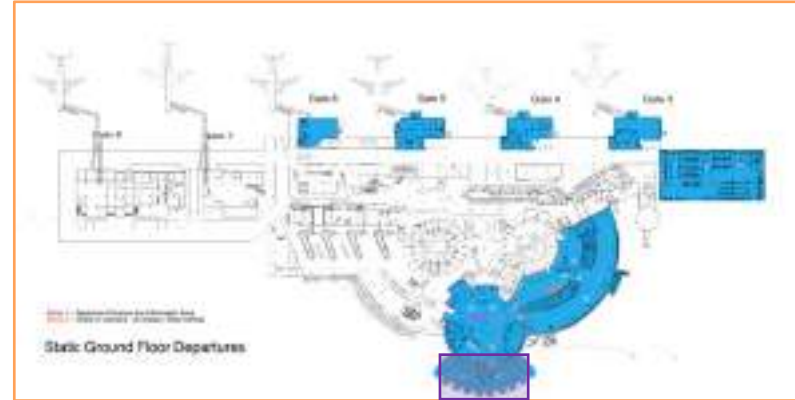
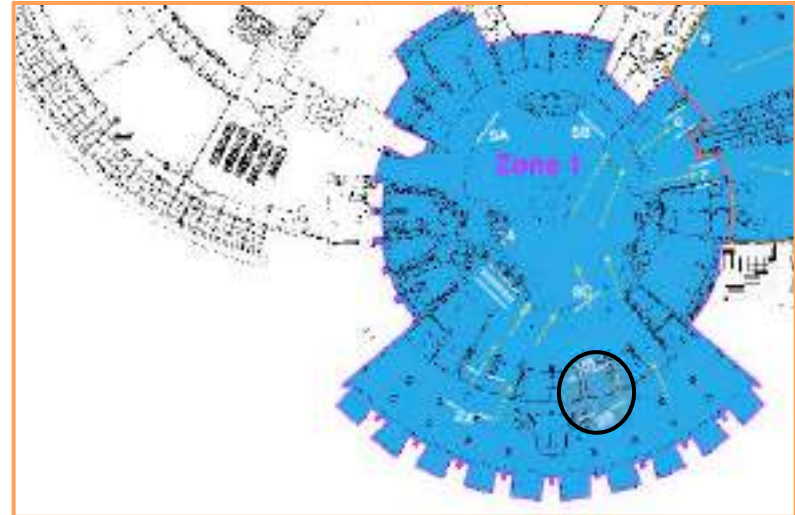
Estimated Departure passengers 2023\*  
7,487,629

# DEPARTURE MAIN ENTRANCE



UAE SHA 002A

**SITE LOCATION: ZONE 1**  
**FIRST FLOOR:** Passengers entering Departure Terminal Building towards Information Centre



## SITE DATA

**Media**  
 One-way vision stickers

**Size**  
 325(W) X 215(H) cms.

**Displays**  
 4

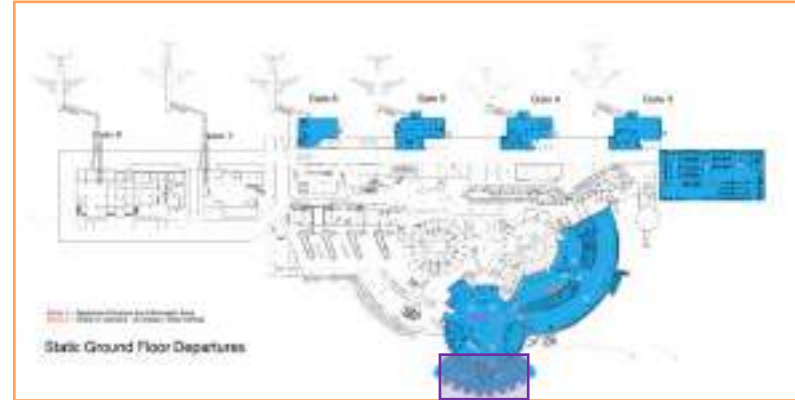
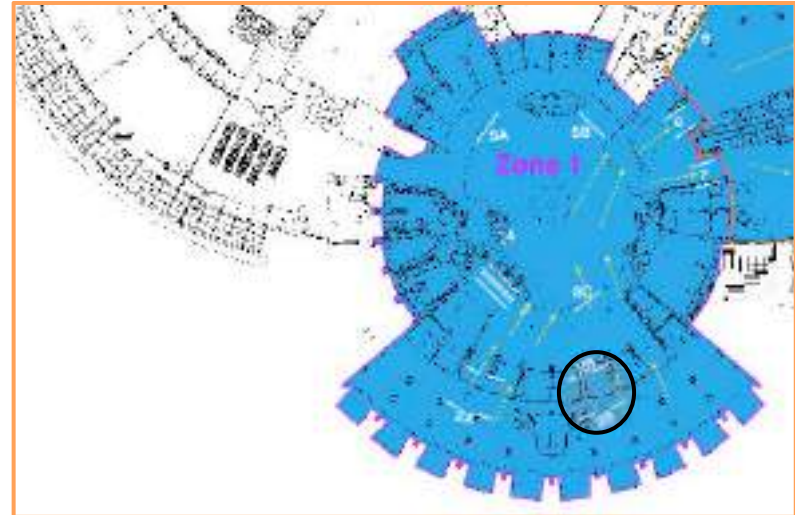
## RATES

**STAND ALONE**  
 Tariff Rate

# DEPARTURE MAIN ENTRANCE



**SITE LOCATION: ZONE 1**  
 FIRST FLOOR: Passengers entering Departure Terminal Building towards Information Centre



## SITE DATA

**Media**  
 One-way vision stickers

**Size**  
 325(W) X 215(H) cms.

**Displays**  
 4

## RATES

**NETWORK**  
 Package Rate\*

\*Max. 1 month booking permitted

# DEPARTURE MAIN ENTRANCE



UAE SHA 003

## SITE DATA

**Media**  
One-way vision stickers

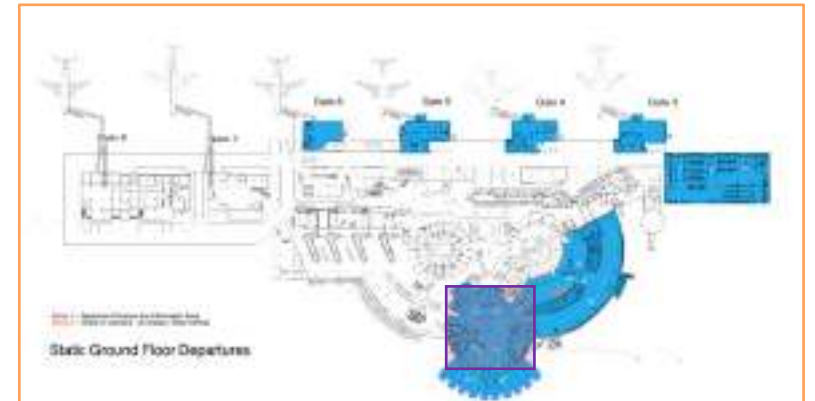
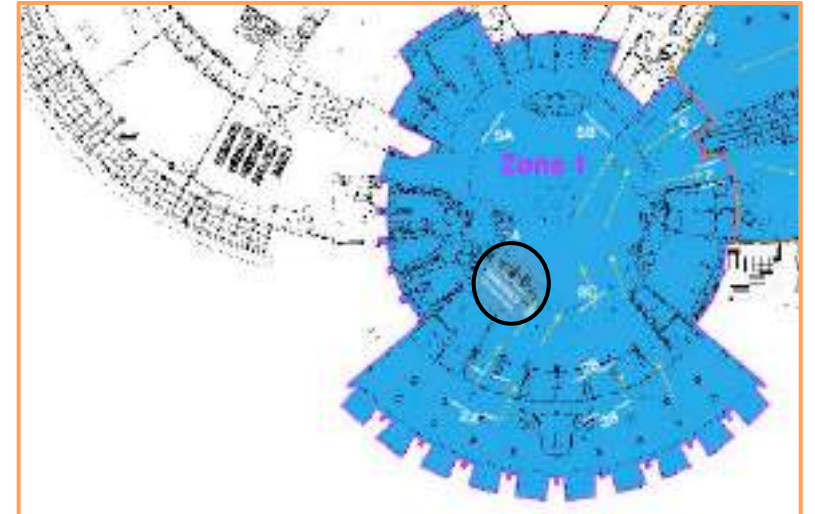
**Size**  
1150(W) X 55(H) cms.

**Displays**  
6

## RATES

**STAND ALONE**  
Tariff Rate

**SITE LOCATION: ZONE 1**  
FIRST FLOOR: Passengers at Information Centre using escalators for first floor offices / retail



# DEPARTURE MAIN ENTRANCE



## SITE DATA

**Media**  
Vinyl stickers

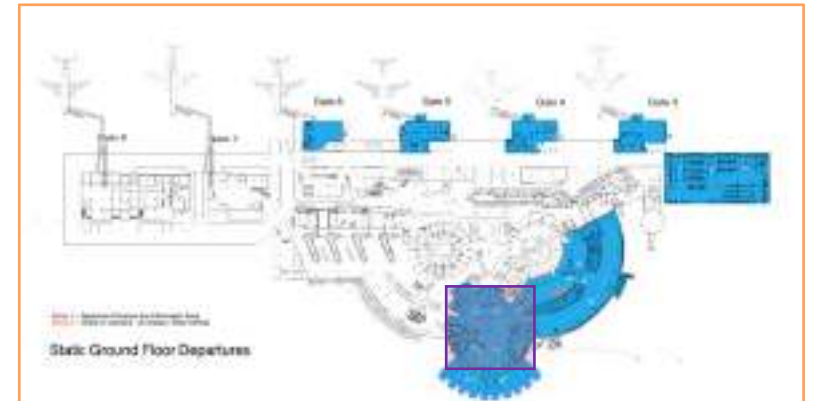
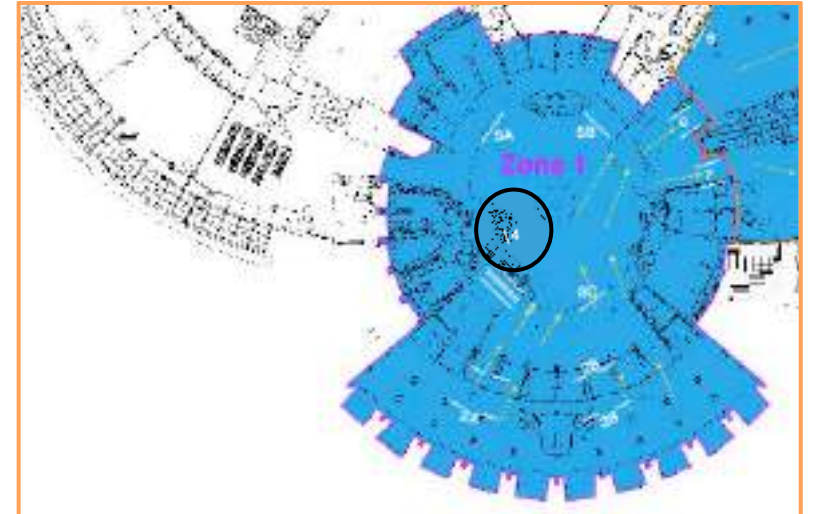
**Size**  
Wall: 635(W) X 100(H) cms.  
Lift : 410(W) X 184(H) cms.

**Displays**  
2 + 2

## RATES

**STAND ALONE**  
Tariff Rate

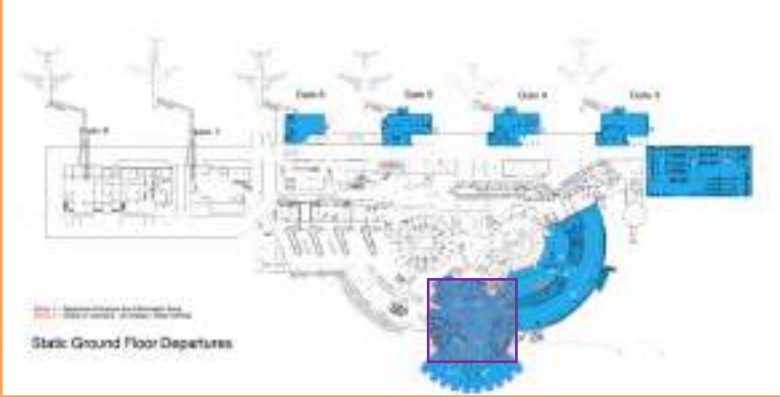
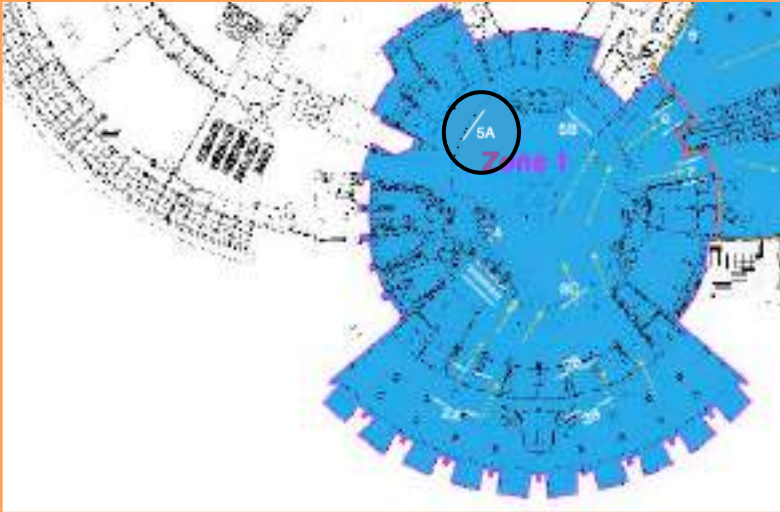
**SITE LOCATION: ZONE 1**  
FIRST FLOOR: Passengers at Information Centre using elevators for first floor offices / retail



# DEPARTURE MAIN ENTRANCE



**SITE LOCATION: ZONE 1**  
**FIRST FLOOR:** Passengers at the main Information Centre near retail stores



## SITE DATA

**Media**  
 One-way vision stickers

**Size**  
 1,220(W) X 145(H) cms.

**Displays**  
 1

## RATES

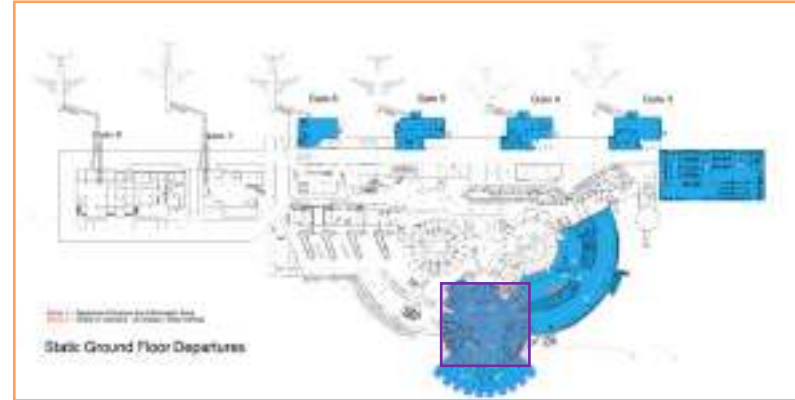
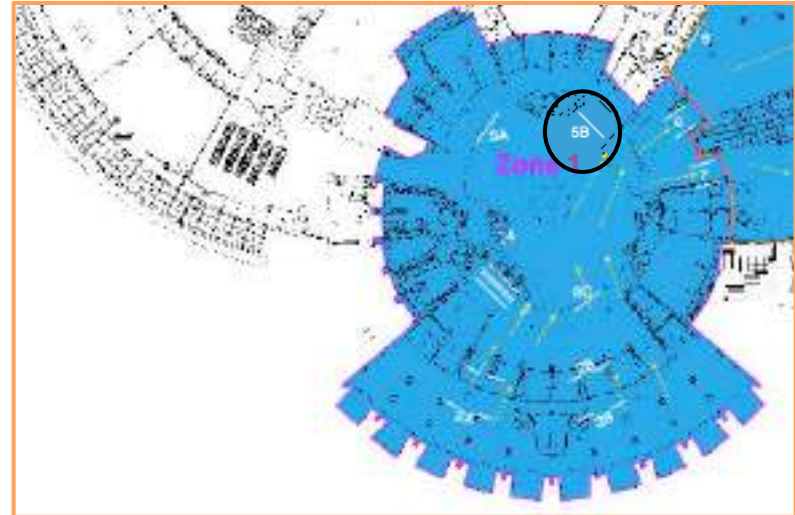
**NETWORK**  
 Package Rate\*

\*Max. 1 month booking permitted

# DEPARTURE MAIN ENTRANCE



**SITE LOCATION: ZONE 1**  
**FIRST FLOOR:** Passengers at the main Information Centre near retail stores



## SITE DATA

**Media**  
 Vinyl stickers

**Size**  
 960(W) X 145(H) cms.

**Displays**  
 1

## RATES

**NETWORK**  
 Package Rate\*

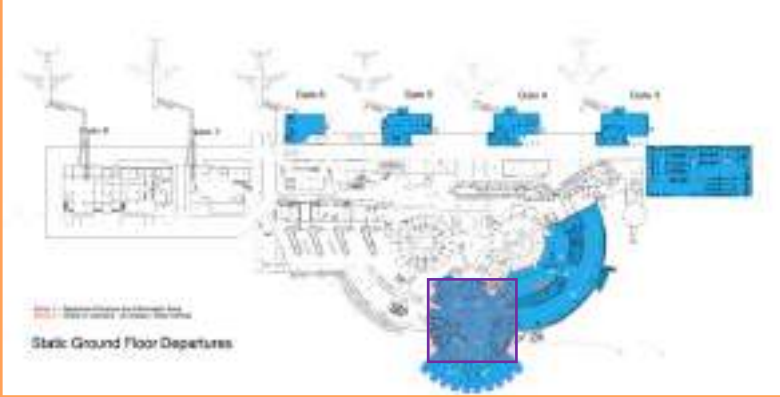
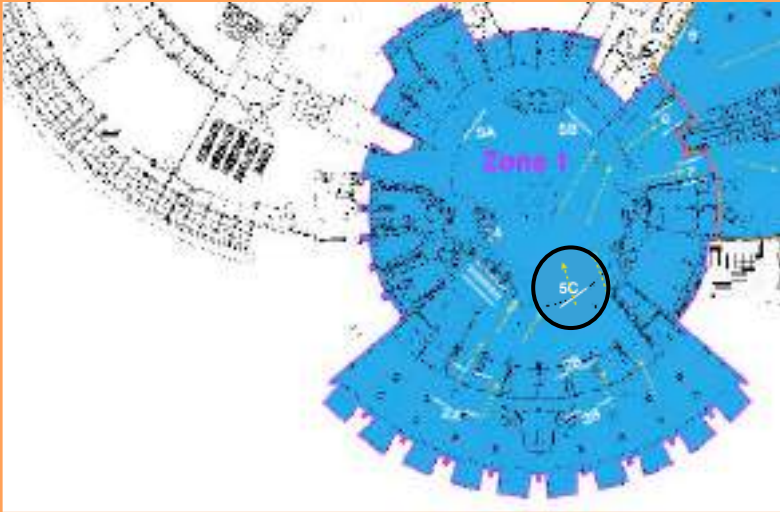
\*Max. 1 month booking permitted



# DEPARTURE MAIN ENTRANCE



**SITE LOCATION: ZONE 1**  
**FIRST FLOOR:** Passengers at the main Information Centre near retail stores



## SITE DATA

**Media**  
 One-way vision stickers

**Size**  
 1,220(W) X 145(H) cms.

**Displays**  
 1

## RATES

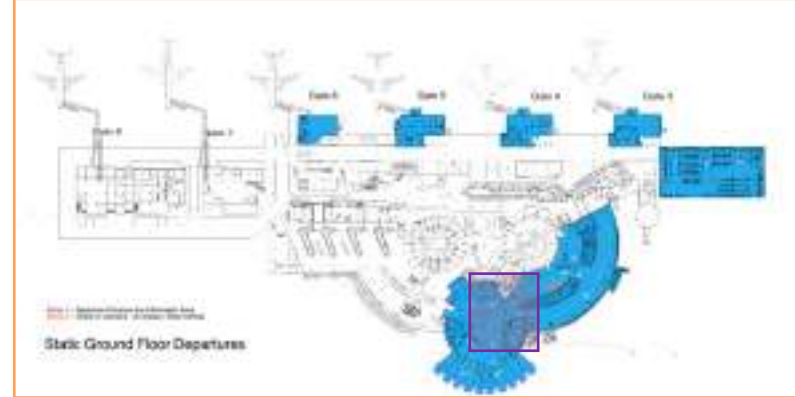
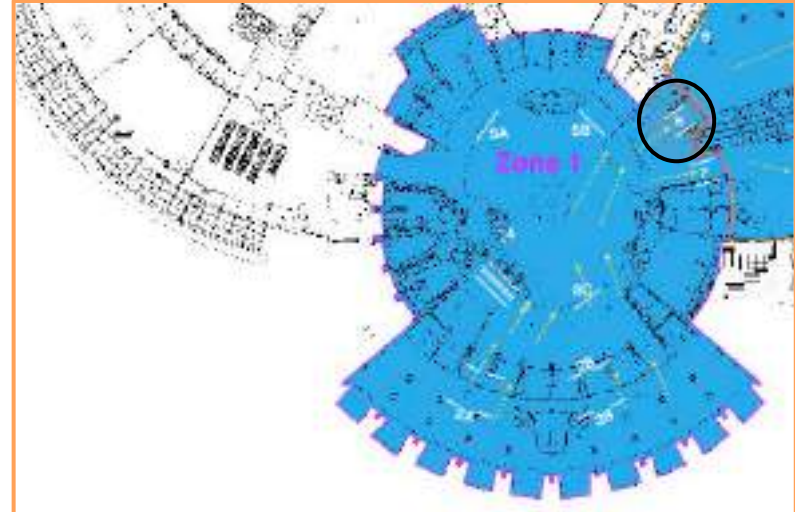
**NETWORK**  
 Package Rate\*

\*Max. 1 month booking permitted

# DEPARTURE MAIN ENTRANCE



**SITE LOCATION: ZONE 1**  
FIRST FLOOR: Passengers at Information Centre heading to Air Arabia Check-in counters



## SITE DATA

**Media**  
Fabric Frame with Print

**Size**  
358(W) X 182(H) cms.

**Displays**  
2

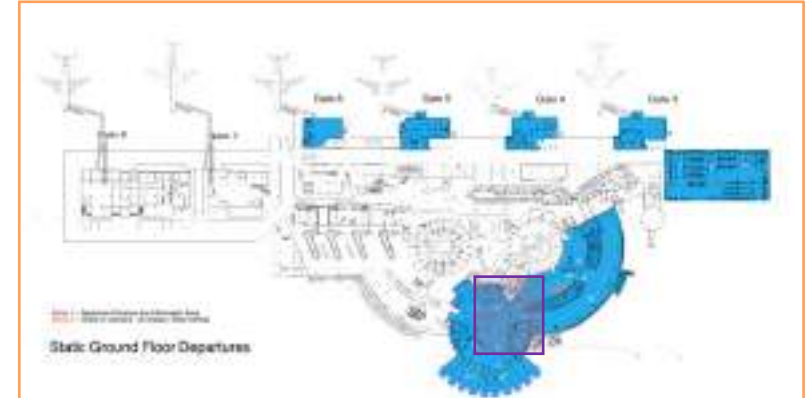
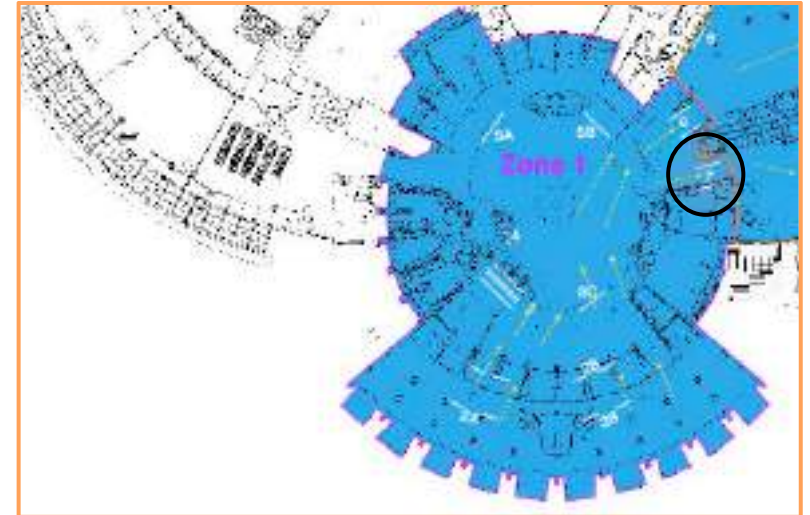
## RATES

**STAND ALONE**  
Tariff Rate

# DEPARTURE MAIN ENTRANCE



**SITE LOCATION: ZONE 1**  
FIRST FLOOR: Passengers at Information Centre heading to other Airline Check-in counters



## SITE DATA

**Media**  
Fabric Frame with Print

**Size**  
358(W) X 182(H) cms.

**Displays**  
2

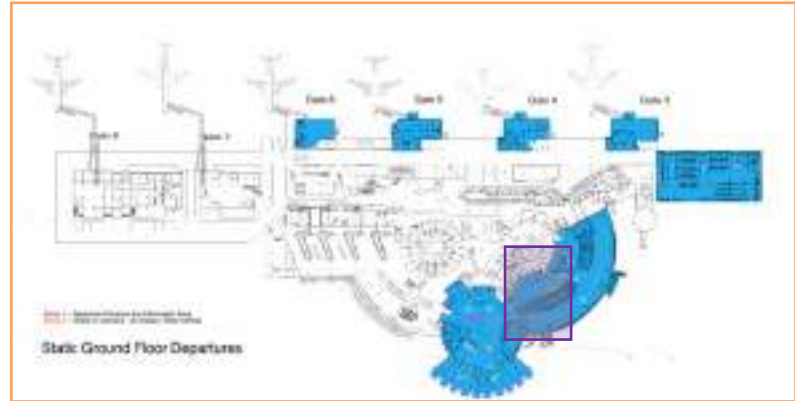
## RATES

**STAND ALONE**  
Tariff Rate

# DEPARTURE CHECK-IN COUNTERS



**SITE LOCATION: ZONE 2**  
 FIRST FLOOR: Passengers at all Airline Check-in counters



## SITE DATA

**Media**  
 Fabric Frame with Print

**Size**  
 1,240(W) X 434(H) cms.

**Displays**  
 1

## RATES

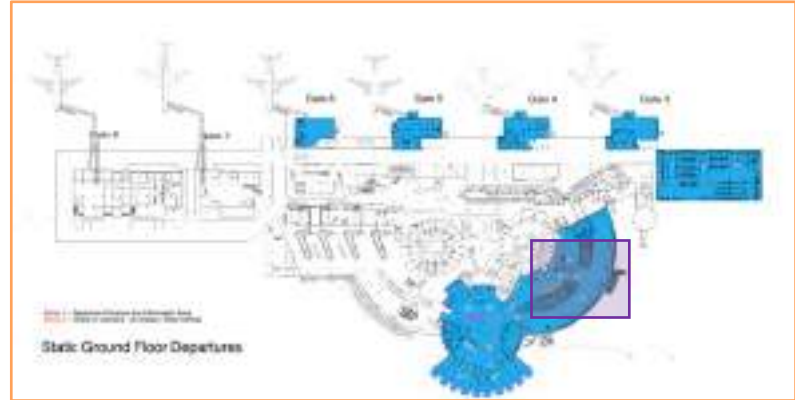
**NETWORK**  
 Package Rate\*

\*Max. 1 month booking permitted

# DEPARTURE CHECK-IN COUNTERS



**SITE LOCATION: ZONE 2**  
FIRST FLOOR: Passengers at all Main Check-in counters



## SITE DATA

**Media**  
Double sided hanging banners

**Size**  
200(W) X 500(H) cms.

**Displays**  
2

## RATES

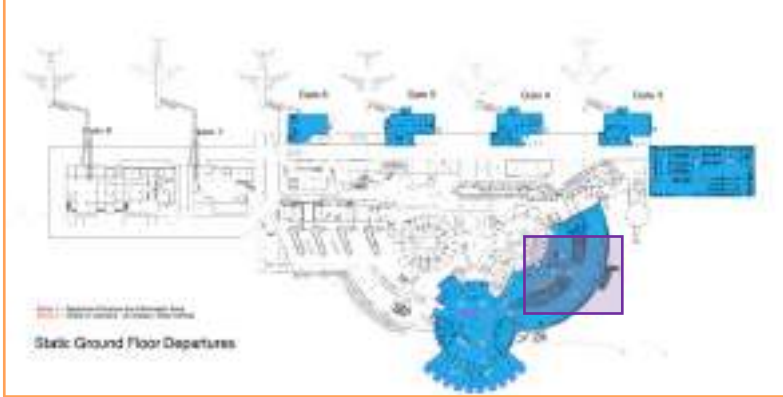
**NETWORK**  
Package Rate\*

\*Max. 1 month booking permitted

# DEPARTURE CHECK-IN COUNTERS



**SITE LOCATION: ZONE 2**  
**FIRST FLOOR:** Passengers using lifts to Immigration counters



## SITE DATA

**Media**  
 Lift glass façade one-way vinyl stickers

**Size**  
 210(W) X 270(H) cms.

**Displays**  
 1

## RATES

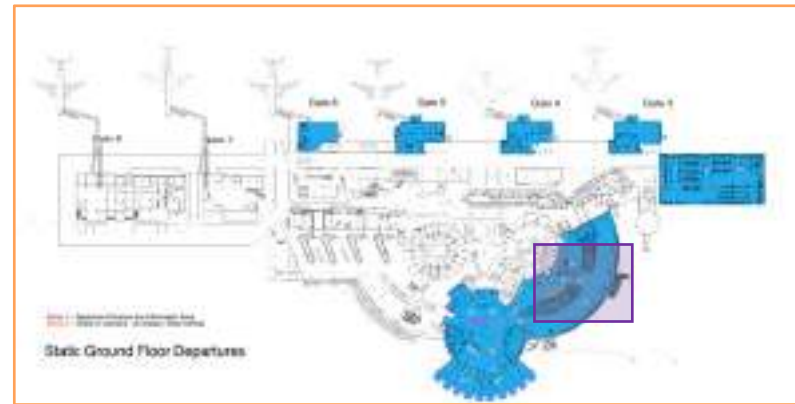
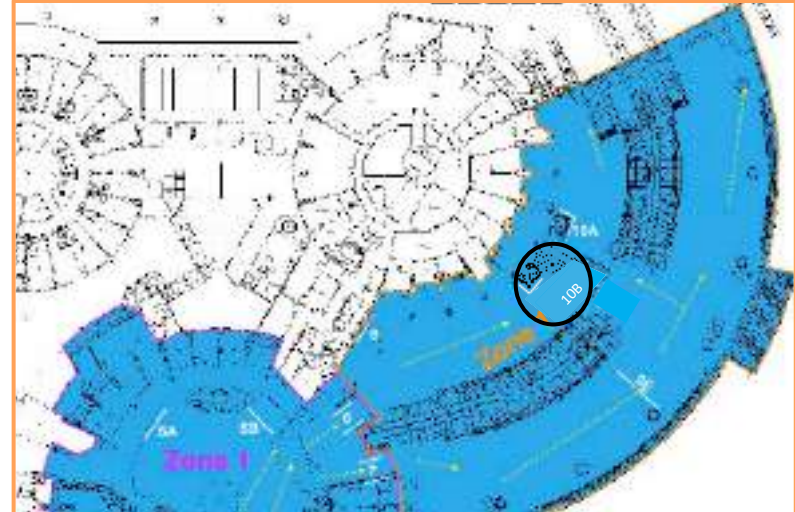
**NETWORK**  
 Package Rate\*

\*Max. 1 month booking permitted

# DEPARTURE CHECK-IN COUNTERS



**SITE LOCATION: ZONE 2**  
**FIRST FLOOR:** Passengers using lifts to Immigration – E-Gate



## SITE DATA

**Media**  
 Lift glass façade one-way vinyl stickers

**Size**  
 210(W) X 270(H) cms.

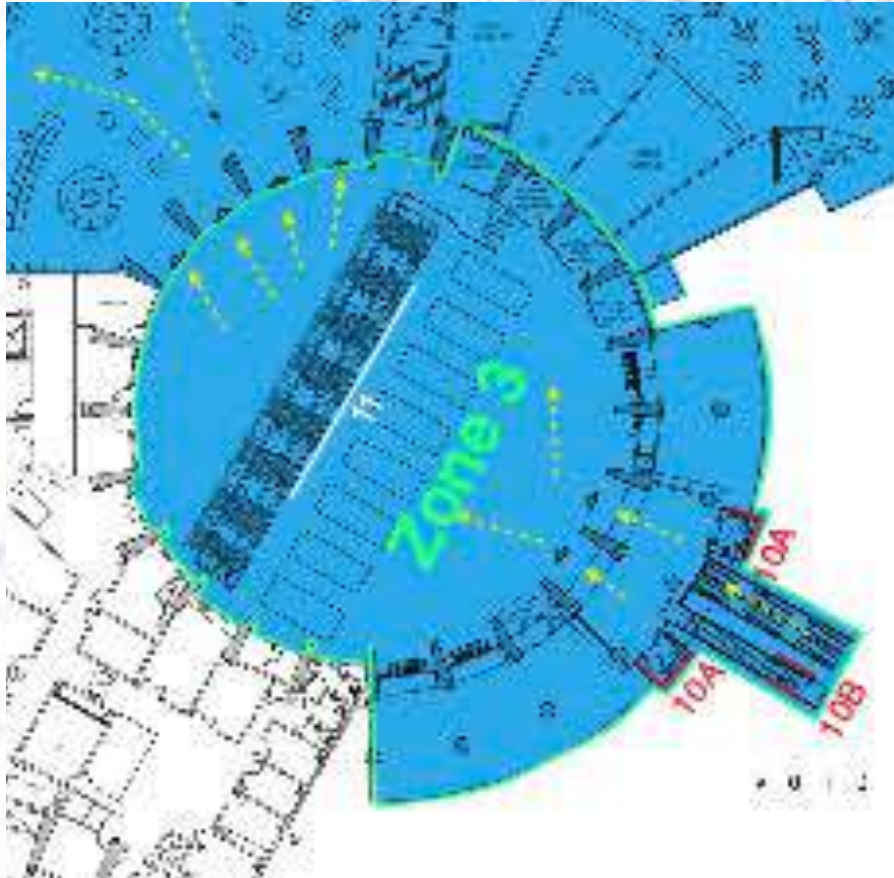
**Displays**  
 1

## RATES

**NETWORK**  
 Package Rate\*

\*Max. 1 month booking permitted

# PASSPORT CONTROL: LEVEL 1



**CAPTIVE AUDIENCE**

**Zone 3**  
Immigration

**Dwell Time:**  
20 - 30 minutes

**Mindset:**  
Anxious and Excited

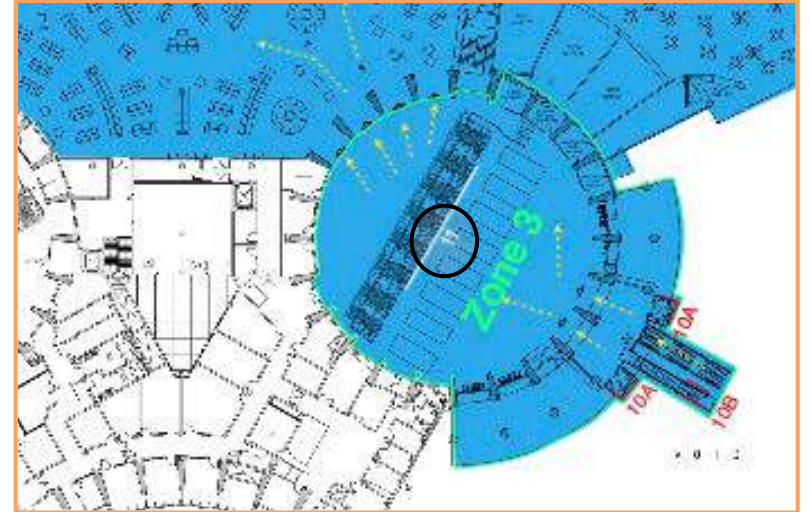
**Media Type:**  
Large format, Digital



# DEPARTURE JOURNEY AT IMMIGRATION



**SITE LOCATION: ZONE 3**  
 FIRST FLOOR: Passengers at Immigration & Egate



## SITE DATA

**Media**  
 Fabric Frame with print

**Size**  
 1,430(W) X 122(H) cms.

**Displays**  
 1

## RATES

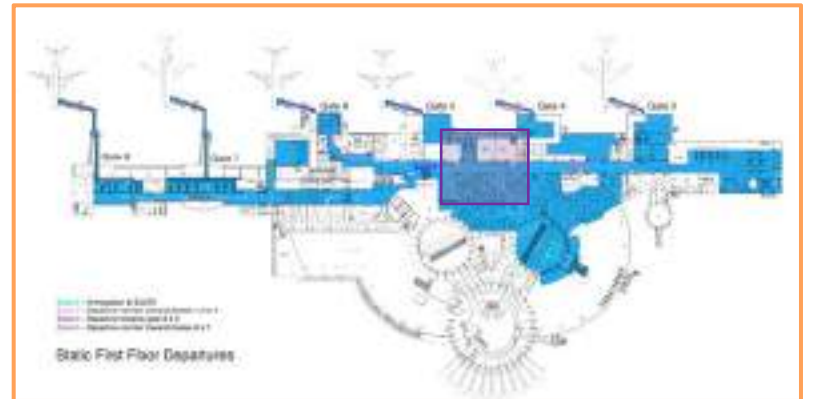
**NETWORK**  
 Package Rate\*

\*Max. 1 month booking permitted

# DEPARTURE JOURNEY FROM MAIN CONCOURSE



**SITE LOCATION: ZONE 4**  
**FIRST FLOOR: Passengers at Main Departure Concourse heading to Gate 4 & 5; 3 & 1**



## SITE DATA

**Media**  
 UV Flex Backlit

**Size**  
 380(W) X 150(H) cms.

**Displays**  
 1

## RATES

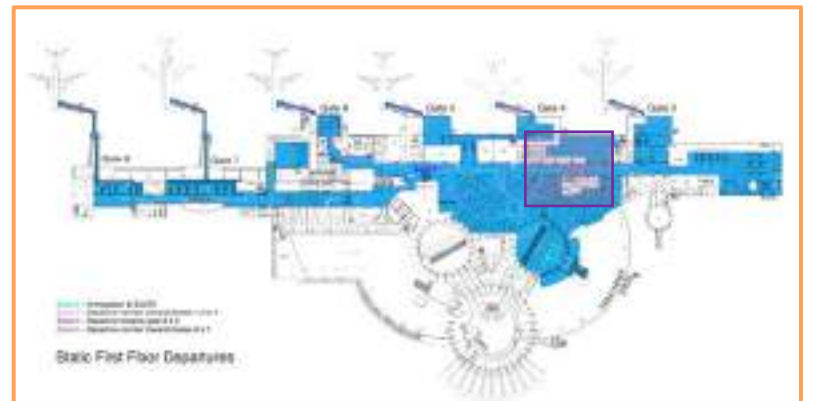
**NETWORK**  
 Package Rate\*

\*Max. 1 month booking permitted

# DEPARTURE JOURNEY AT MAIN CONCOURSE



**SITE LOCATION: ZONE 4**  
 FIRST FLOOR: Passengers at Departure Hall near Food Court, Forex heading to Gate 3



## SITE DATA

**Media**  
 UV Flex Backlit

**Size**  
 500(W) X 170(H) cms.

**Displays**  
 1

## RATES

**NETWORK**  
 Package Rate\*

\*Max. 1 month booking permitted

# DEPARTURE JOURNEY AT MAIN CONCOURSE



**SITE LOCATION: ZONE 4**  
 FIRST FLOOR: Passengers at Departure Hall heading to wait area AND Gate 3



## SITE DATA

**Media**  
 UV Flex Backlit

**Size**  
 380(W) X 150(H) cms.

**Displays**  
 1

## RATES

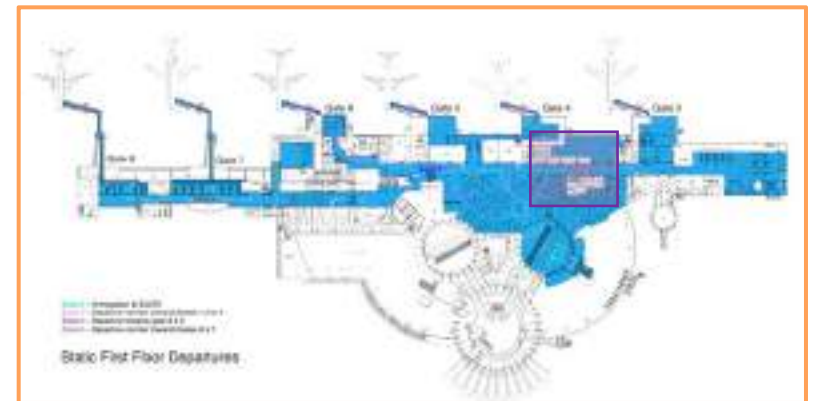
**NETWORK**  
 Package Rate\*

\*Max. 1 month booking permitted

# DEPARTURE JOURNEY AT MAIN CONCOURSE



**SITE LOCATION: ZONE 4**  
 FIRST FLOOR: Passengers at wait area – Smoking Cabin Glass Façade



## SITE DATA

**Media**  
 Vinyl Sticker

**Size**  
 257(W) X 76(H) cms. (Door)  
 140(W) X 170(H) cms. (Wall)

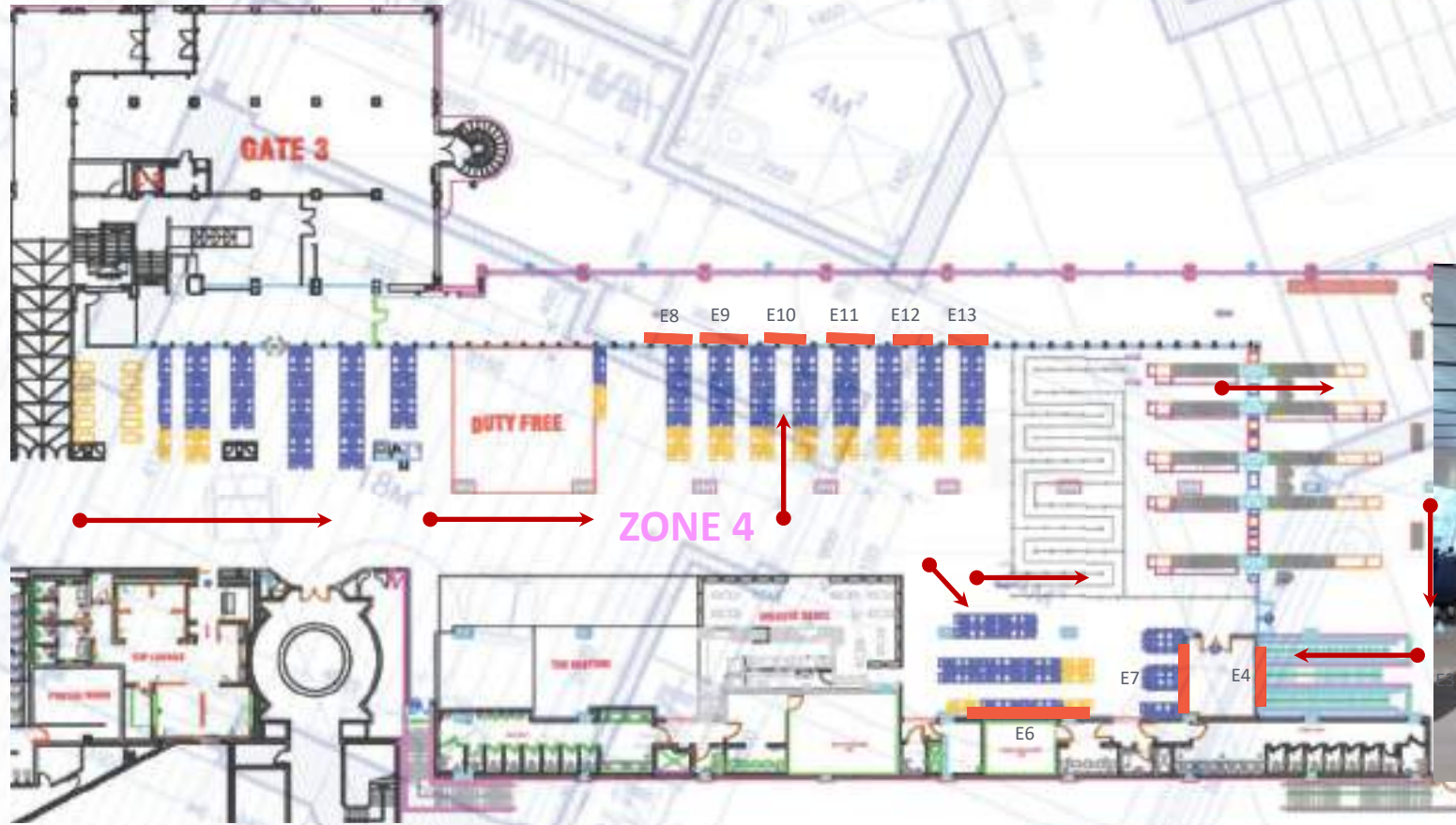
**Displays**  
 1

## RATES

**NETWORK**  
 Package Rate\*

\*Max. 1 month booking permitted

# LEVEL 1- DEPARTURES NEW EAST WING



➔ Passenger Traffic

|                                                           |                                       |                                                                 |                                    |
|-----------------------------------------------------------|---------------------------------------|-----------------------------------------------------------------|------------------------------------|
| <b>Zone 4 - EW</b><br>Duty Free, Retail, F&B,<br>Security | <b>Dwell Time:</b><br>25 - 45 minutes | <b>Mindset:</b><br>Relaxed, buying frame of<br>mind and Excited | <b>Media Type:</b><br>Large format |
|-----------------------------------------------------------|---------------------------------------|-----------------------------------------------------------------|------------------------------------|

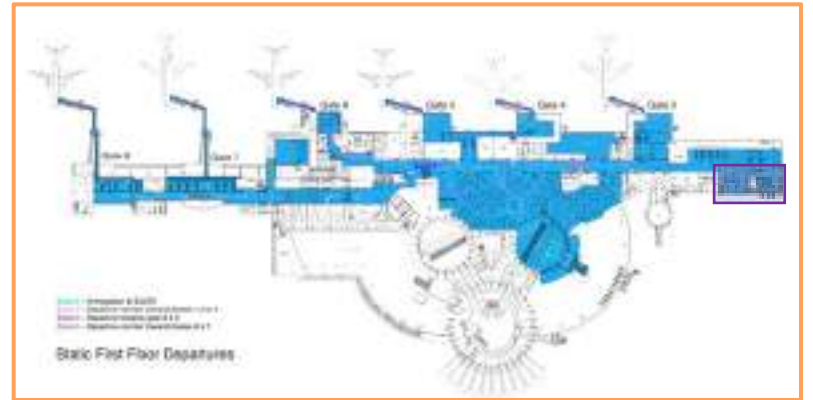
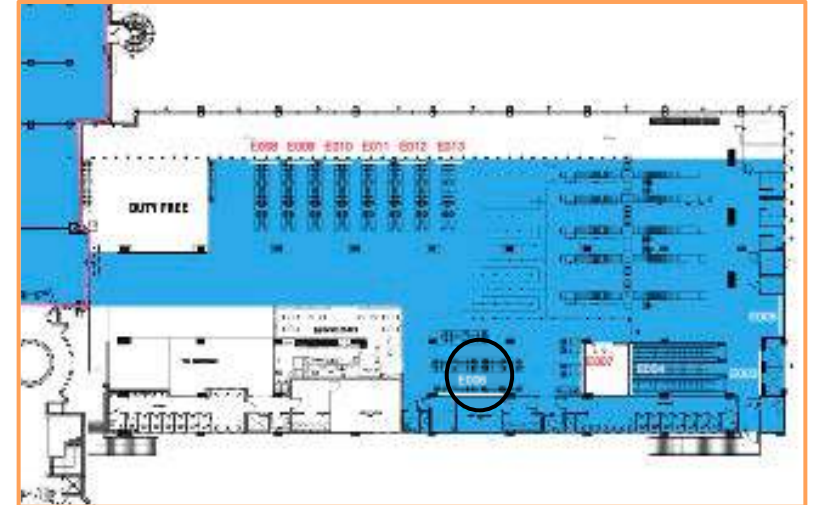
**Zone 4** – Departure Corridor from Gate 3 to Gate 1 (new wing)

# DEPARTURE JOURNEY AT EAST WING



UAE SHA E 006

**SITE LOCATION: ZONE 4**  
 FIRST FLOOR: Passengers at East Wing Waiting Area after retail and F&B shops



## SITE DATA

**Media**  
 UV Flex Backlit

**Size**  
 367.5(W) X 186(H) cms.

**Displays**  
 1

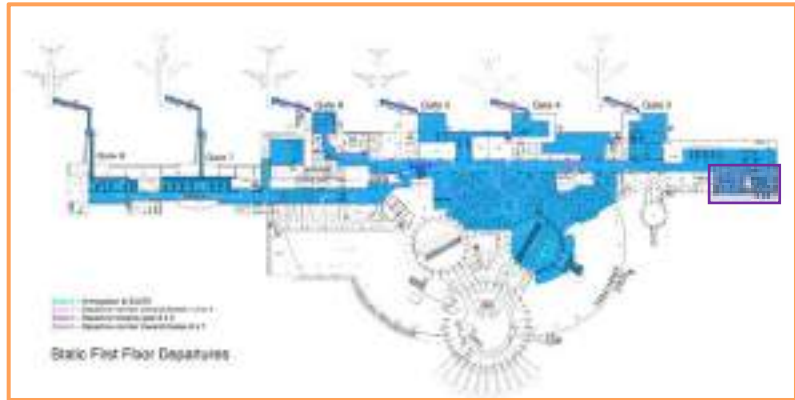
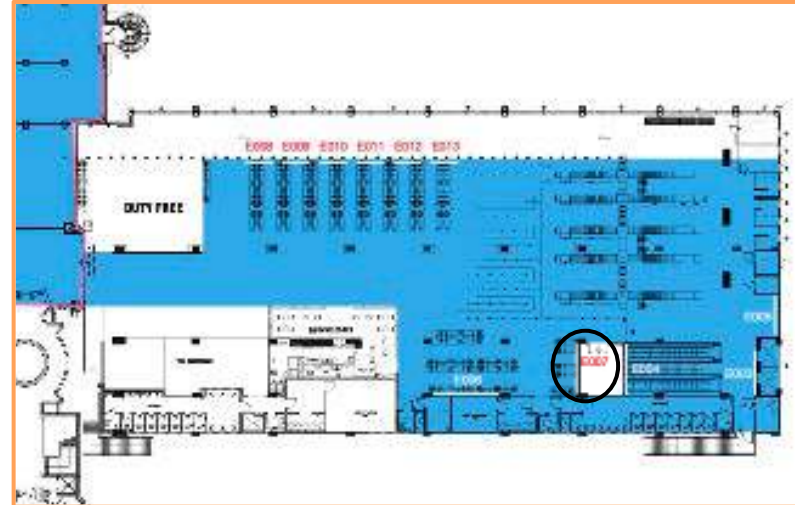
## RATES

**STAND ALONE**  
 Tariff Rate

# DEPARTURE JOURNEY AT EAST WING



**SITE LOCATION: ZONE 4**  
**FIRST FLOOR:** Passengers at East Wing Waiting Area after shops



## SITE DATA

**Media**  
 UV Flex Backlit

**Size**  
 367.5(W) X 186(H) cms.

**Displays**  
 1

## RATES

**NETWORK**  
 Package Rate\*

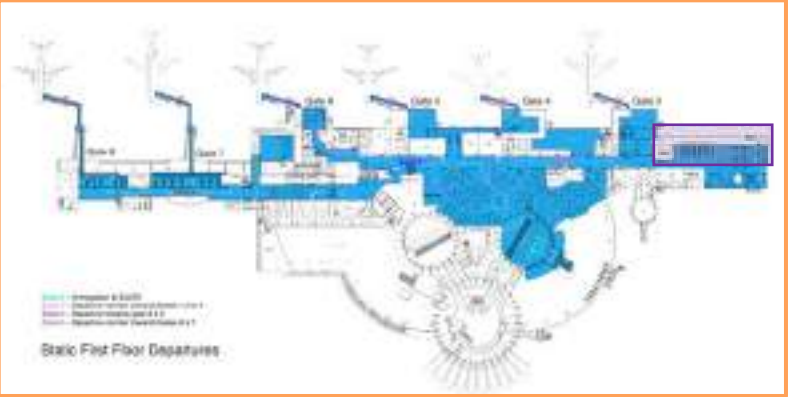
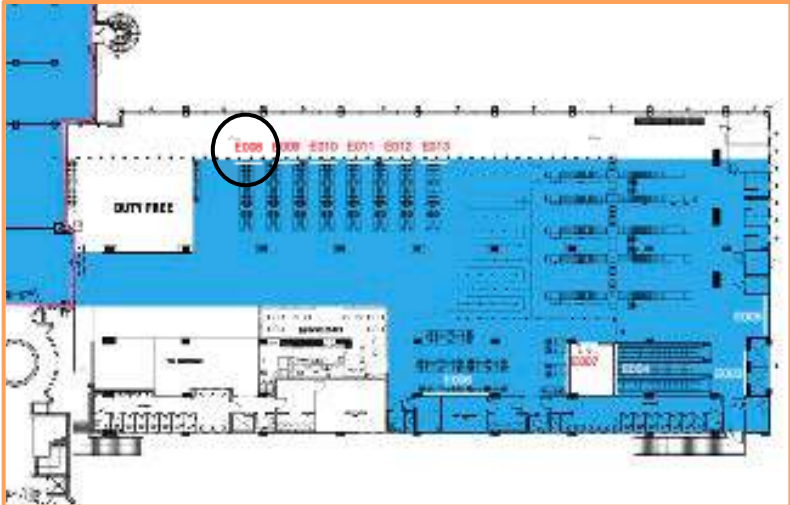
\*Max. 1 month booking permitted



# DEPARTURE JOURNEY AT EAST WING



**SITE LOCATION: ZONE 4**  
**FIRST FLOOR:** Passengers at East Wing Waiting Area opposite Duty Free & Shops



## SITE DATA

**Media**  
 UV Flex Backlit

**Size**  
 300(W) X 100(H) cms.

**Displays**  
 1

## RATES

**NETWORK**  
 Package Rate\*

\*Max. 1 month booking permitted

# DEPARTURE JOURNEY AT EAST WING



UAE SHA E 009

GOLD NETWORK – G5

## SITE DATA

**Media**  
UV Flex Backlit

**Size**  
300(W) X 100(H) cms.

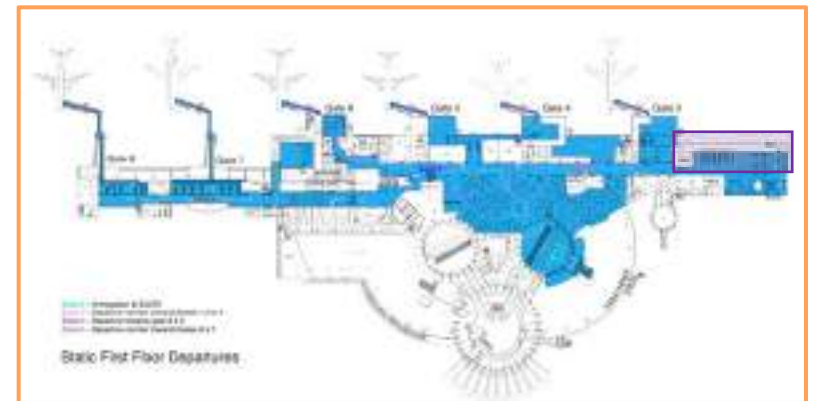
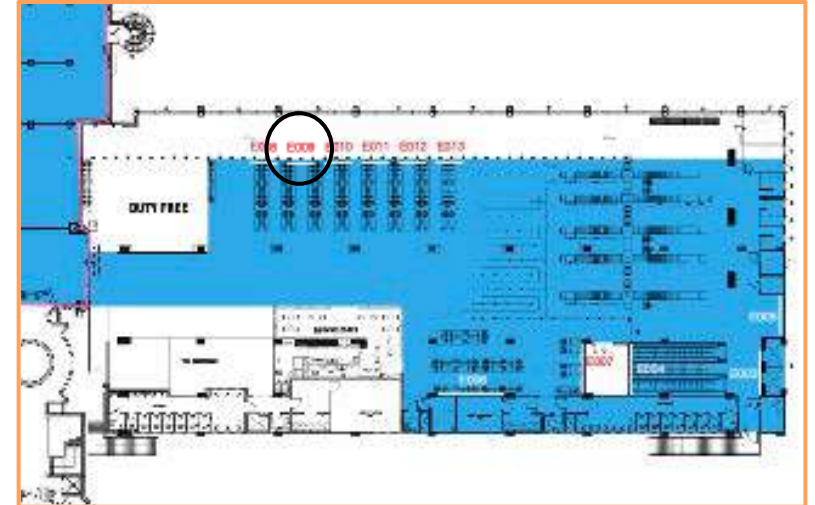
**Displays**  
1

## RATES

**NETWORK**  
Package Rate\*

\*Max. 1 month booking permitted

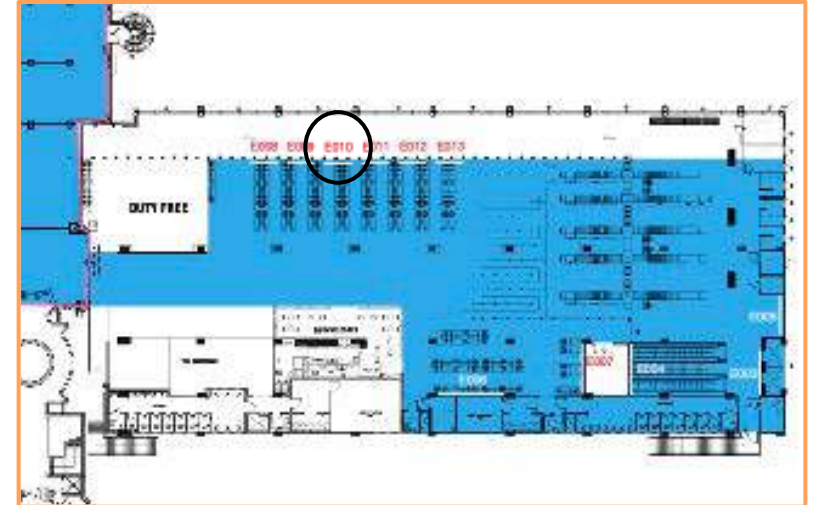
**SITE LOCATION: ZONE 4**  
FIRST FLOOR: Passengers at East Wing Waiting Area opposite Duty Free & Shops



# DEPARTURE JOURNEY AT EAST WING



**SITE LOCATION: ZONE 4**  
**FIRST FLOOR:** Passengers at East Wing Waiting Area opposite Duty Free & Shops



## SITE DATA

**Media**  
 UV Flex Backlit

**Size**  
 300(W) X 100(H) cms.

**Displays**  
 1

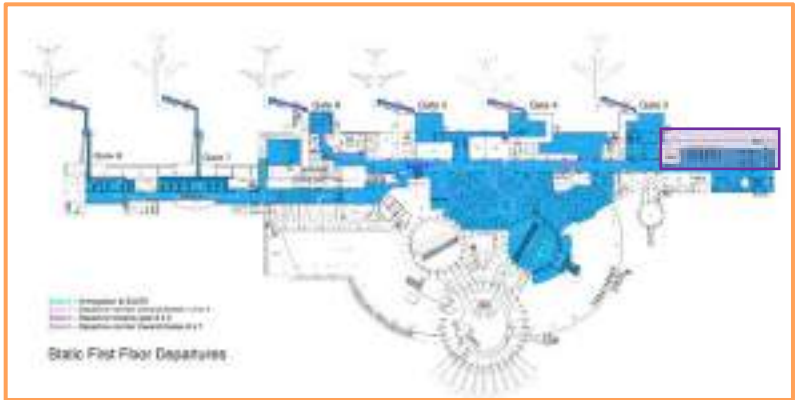
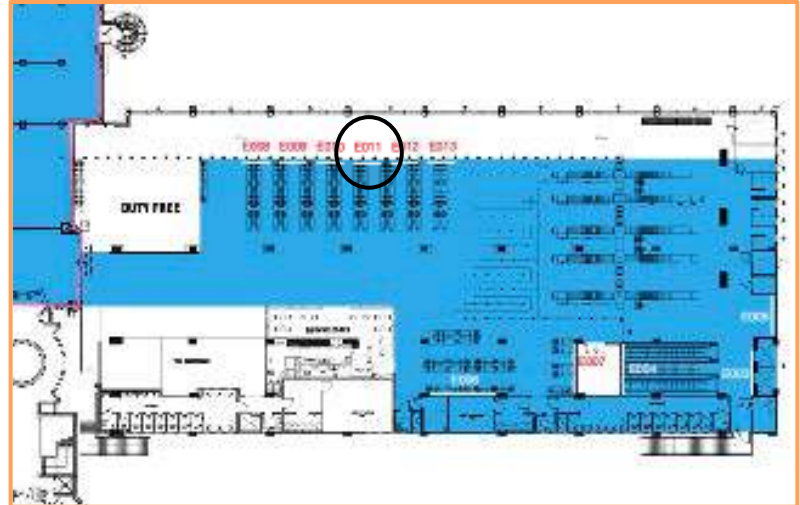
## RATES

**STAND ALONE**  
 Tariff Rate

# DEPARTURE JOURNEY AT EAST WING



**SITE LOCATION: ZONE 4**  
**FIRST FLOOR:** Passengers at East Wing Waiting Area opposite Duty Free & Shops



## SITE DATA

**Media**  
 UV Flex Backlit

**Size**  
 300(W) X 100(H) cms.

**Displays**  
 1

## RATES

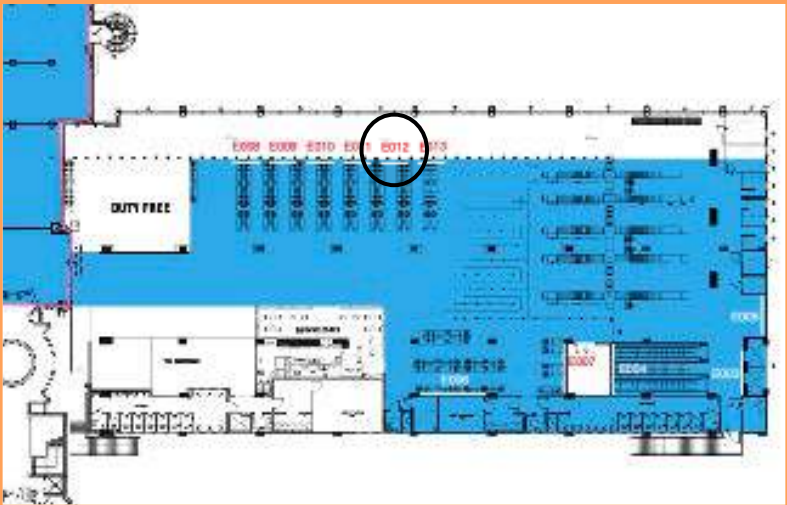
**STAND ALONE**  
 Tariff Rate

# DEPARTURE JOURNEY AT EAST WING



UAE SHA E 012

**SITE LOCATION: ZONE 4**  
**FIRST FLOOR:** Passengers at East Wing Waiting Area opposite Duty Free & Shops



## SITE DATA

**Media**  
 UV Flex Backlit

**Size**  
 300(W) X 100(H) cms.

**Displays**  
 1

## RATES

**STAND ALONE**  
 Tariff Rate

# DEPARTURE JOURNEY AT EAST WING



UAE SHA E 013

TITANIUM NETWORK – T11

## SITE DATA

**Media**  
UV Flex Backlit

**Size**  
300(W) X 100(H) cms.

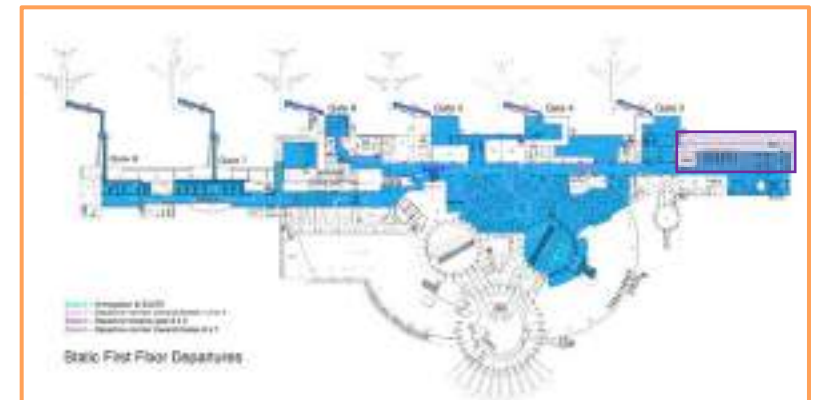
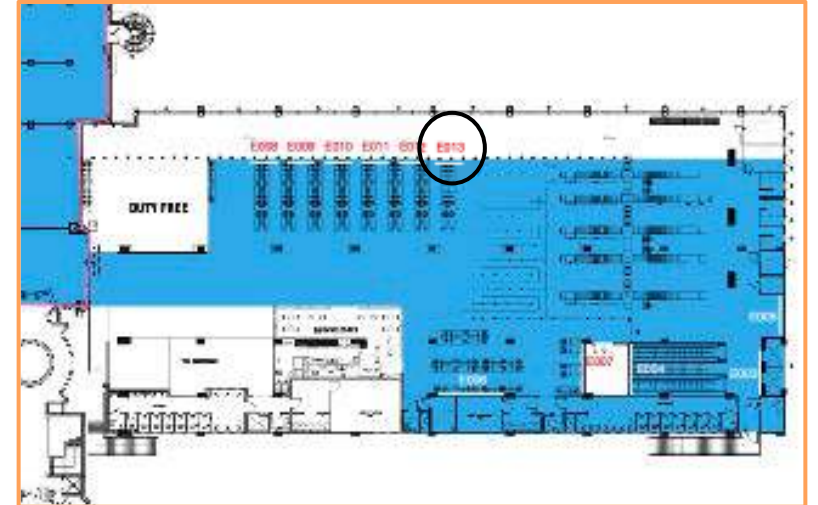
**Displays**  
1

## RATES

**NETWORK**  
Package Rate\*

\*Max. 1 month booking permitted

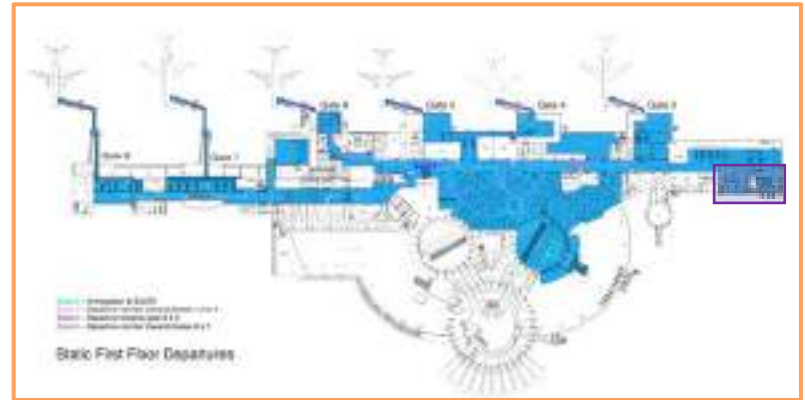
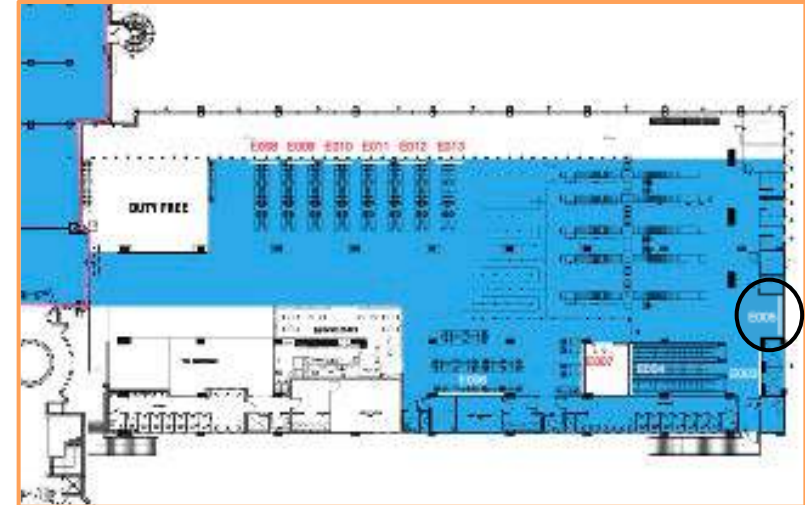
**SITE LOCATION: ZONE 4**  
FIRST FLOOR: Passengers at East Wing Waiting Area opposite Duty Free & Shops



# DEPARTURE JOURNEY TOWARDS GATE 1



**SITE LOCATION: ZONE 4**  
 FIRST FLOOR: Passengers at East Wing heading to Ground Floor Departure buses after security



## SITE DATA

**Media**  
 UV Flex Backlit

**Size**  
 360.5(W) X 300(H) cms.

**Displays**  
 1

## RATES

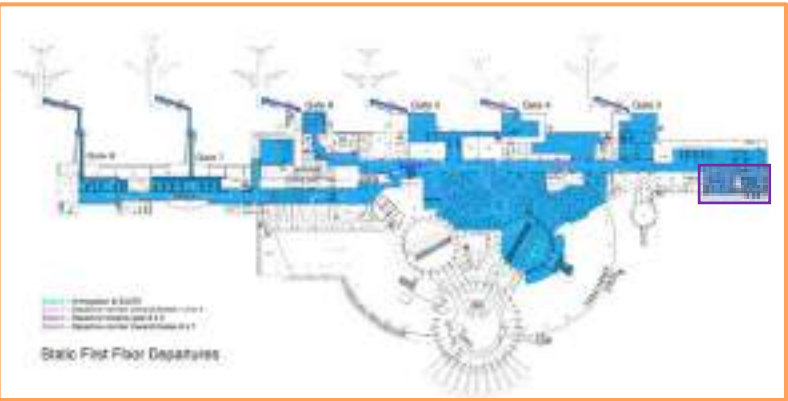
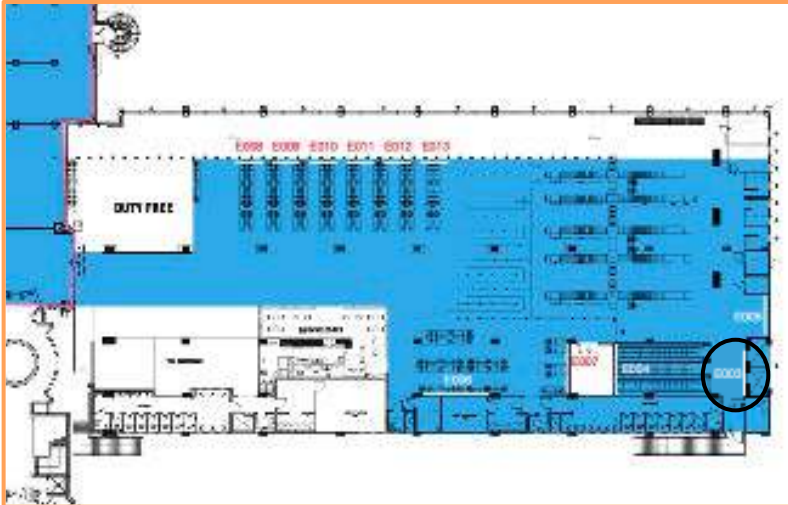
**NETWORK**  
 Package Rate\*

\*Max. 1 month booking permitted

# DEPARTURE JOURNEY TOWARDS GATE 1



**SITE LOCATION: ZONE 4**  
 FIRST FLOOR: Passengers at New Wing taking elevator to Gr. Floor buses after security



## SITE DATA

**Media**  
 UV Flex Backlit

**Size**  
 500(W) X 100(H) cms.

**Displays**  
 1

## RATES

**NETWORK**  
 Package Rate\*

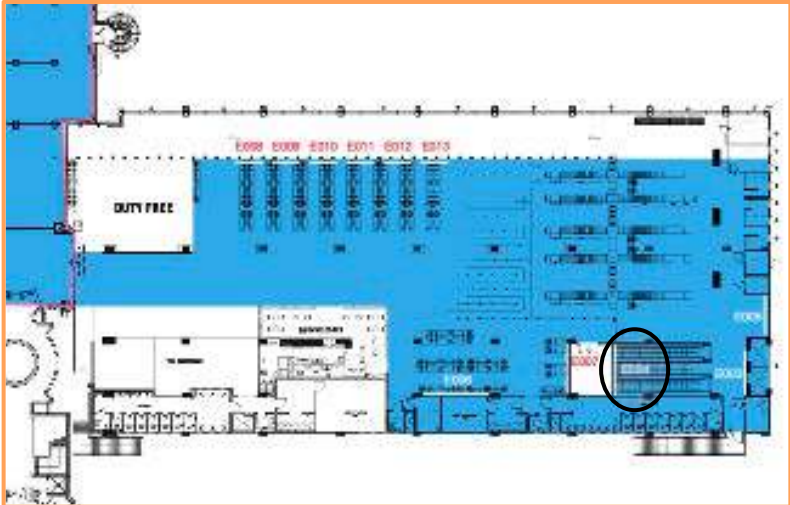
\*Max. 1 month booking permitted



# DEPARTURE JOURNEY TOWARDS GATE 1



**SITE LOCATION: ZONE 4**  
 FIRST FLOOR: Passengers at East Wing taking escalator to Gr Floor buses after security



## SITE DATA

**Media**  
 UV Flex Backlit

**Size**  
 400(W) X 305(H) cms.

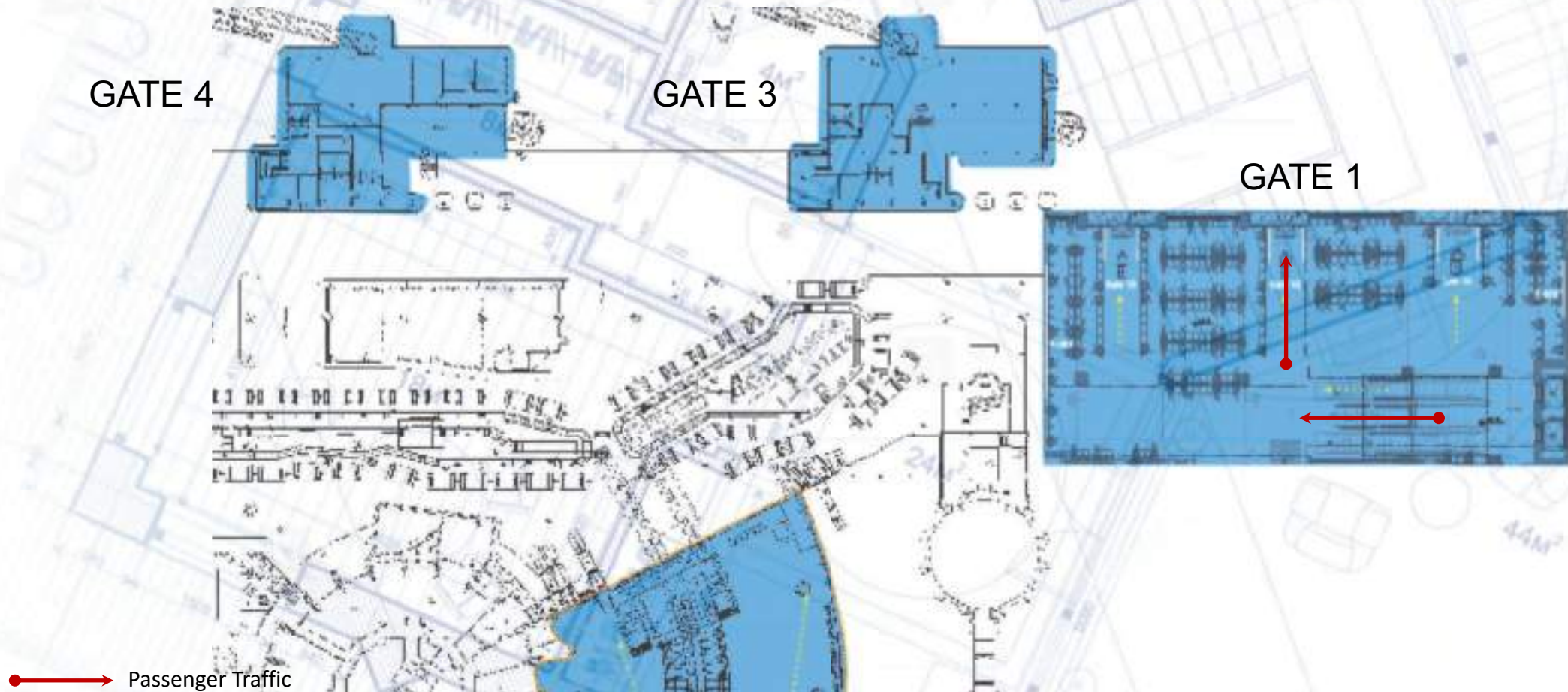
**Displays**  
 1

## RATES

**NETWORK**  
 Package Rate\*

\*Max. 1 month booking permitted

# GROUND LEVEL – DEPARTURES NEW EAST WING



**Zone 4 - EW**  
Duty Free, Retail, F&B,  
Security

**Dwell Time:**  
25 - 45 minutes

**Mindset:**  
Relaxed, buying frame of  
mind and Excited

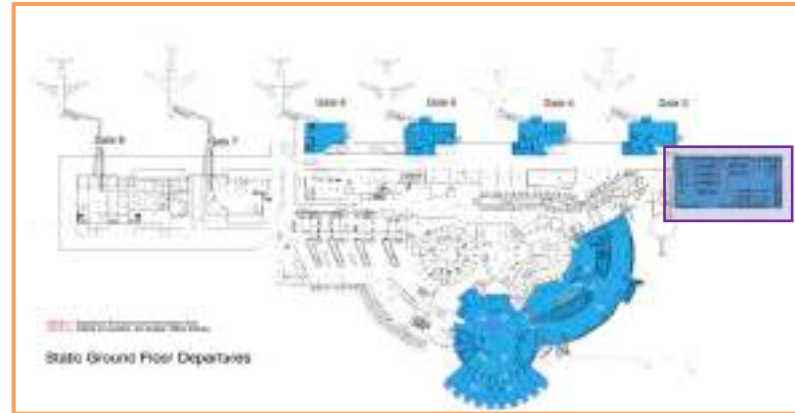
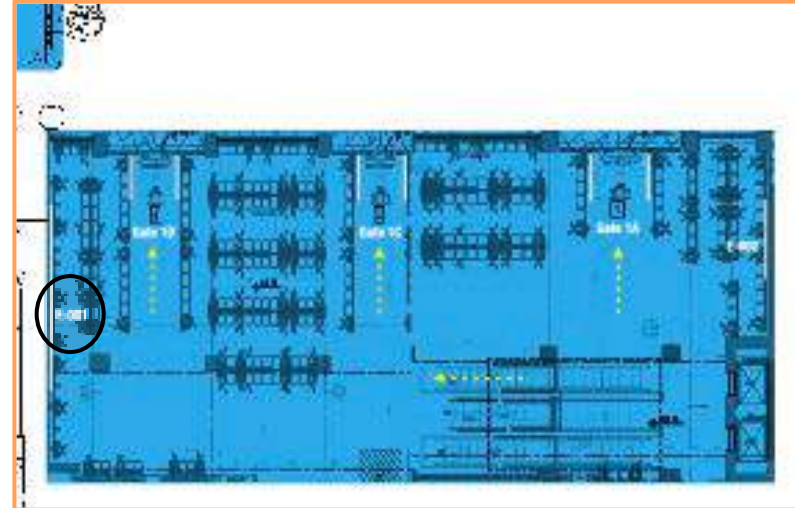
**Media Type:**  
Large format

**Zone 4 – Departure from First Floor to Ground Floor**

# DEPARTURE JOURNEY TOWARDS GATE 1



**SITE LOCATION: ZONE 4**  
GROUND FLOOR: Passengers heading to departure gates 1 A,B,C,D by Airport buses



## SITE DATA

**Media**  
UV Flex Backlit

**Size**  
1200(W) X 140(H) cms.

**Displays**  
1

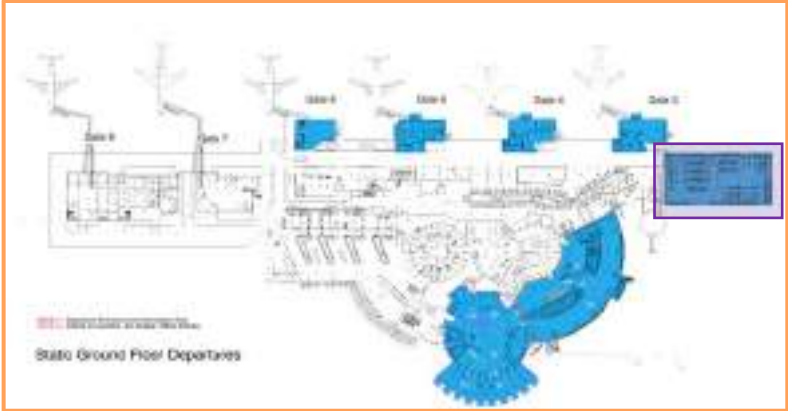
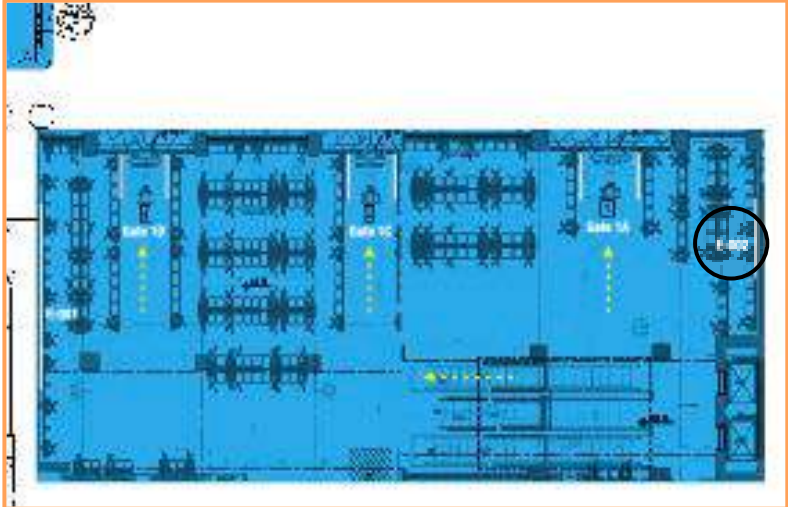
## RATES

**STAND ALONE**  
Tariff Rate

# DEPARTURE JOURNEY TOWARDS GATE 1



**SITE LOCATION: ZONE 4**  
GROUND FLOOR: Passengers heading to departure gates 1 A,B,C,D by Airport buses



## SITE DATA

**Media**  
UV Flex Backlit

**Size**  
540(W) X 140(H) cms.

**Displays**  
1

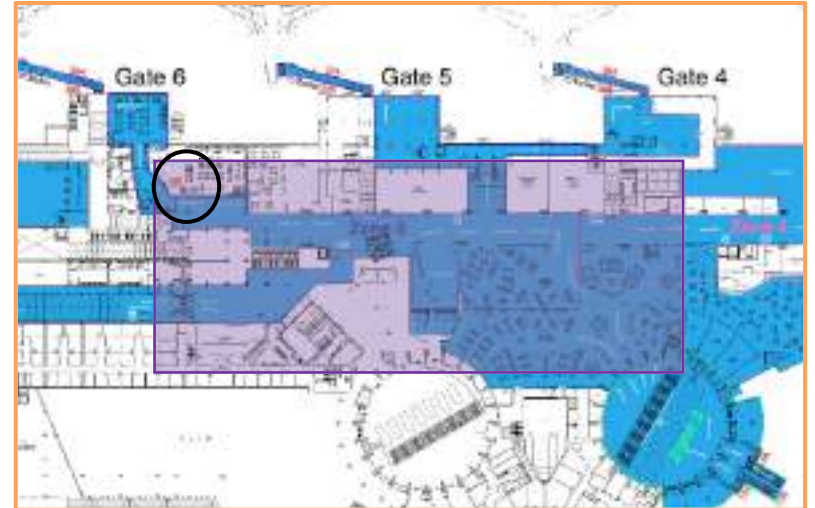
## RATES

**STAND ALONE**  
Tariff Rate

# DEPARTURE JOURNEY TOWARDS GATE 7 & 8



**SITE LOCATION: ZONE 5**  
 FIRST FLOOR: Passengers at Departure Hall seating area at smoking zone towards Gate 6



## SITE DATA

**Media**  
 One-way vision stickers

**Size**  
 345(W) X 240(H) cms.

**Displays**  
 1

## RATES

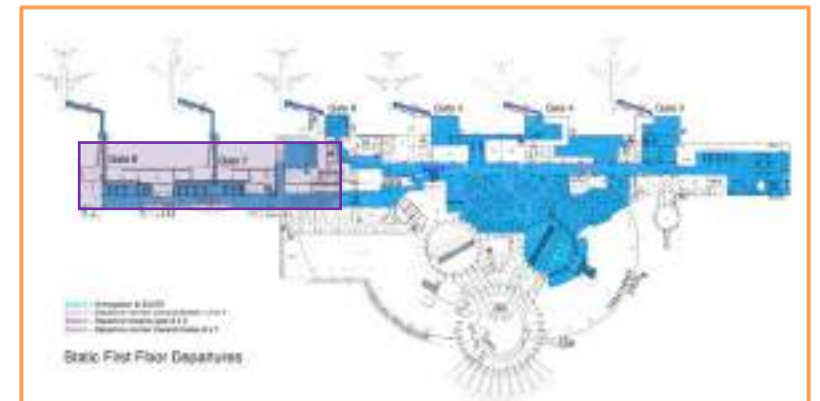
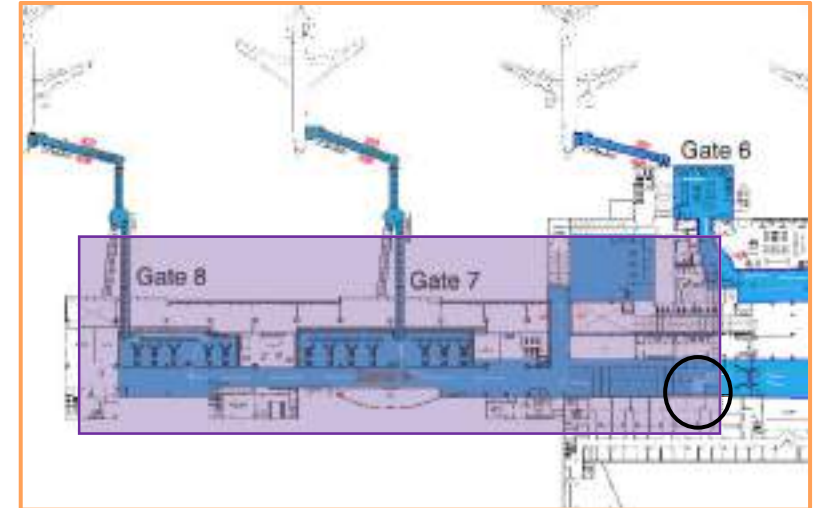
**NETWORK**  
 Package Rate\*

\*Max. 1 month booking permitted

# DEPARTURE JOURNEY TOWARDS GATE 6



**SITE LOCATION: ZONE 6**  
 FIRST FLOOR: Passengers at Departure Corridor to Gate 7 & 8 and holding gates 20-29



## SITE DATA

### Media

Fabric frame with print

### Size

2,000(W) X 220(H) cms.

### Displays

1

## RATES

### NETWORK

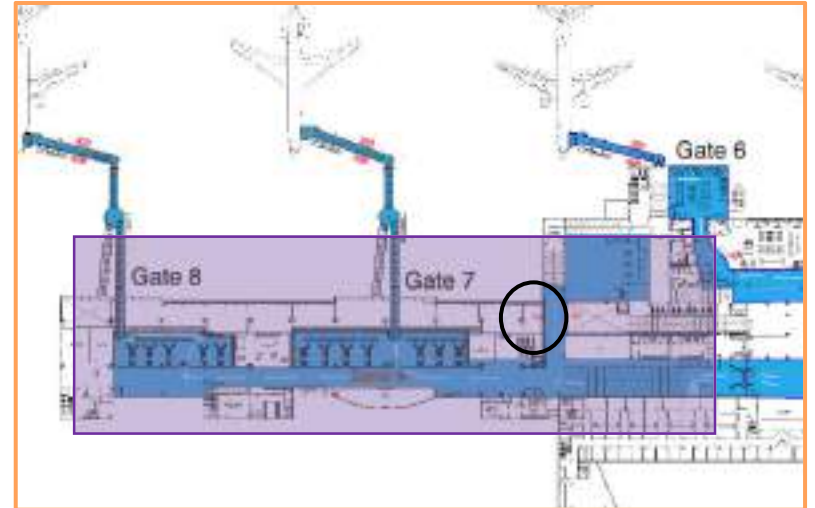
Package Rate\*

\*Max. 1 month booking permitted

# DEPARTURE JOURNEY TOWARDS GATE 6



**SITE LOCATION: ZONE 6**  
 FIRST FLOOR: Passengers at Departure Corridor 6,7 & 8 seating area and holding gates 20-29



## SITE DATA

**Media**  
 Fabric frame with print

**Size**  
 654(W) X 187(H) cms.

**Displays**  
 1

## RATES

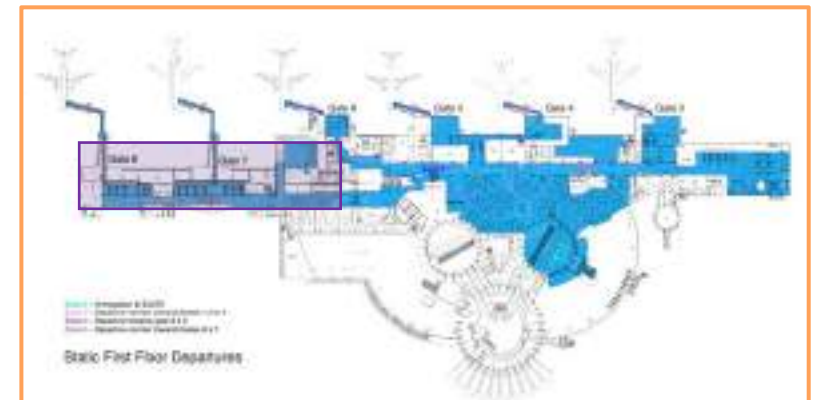
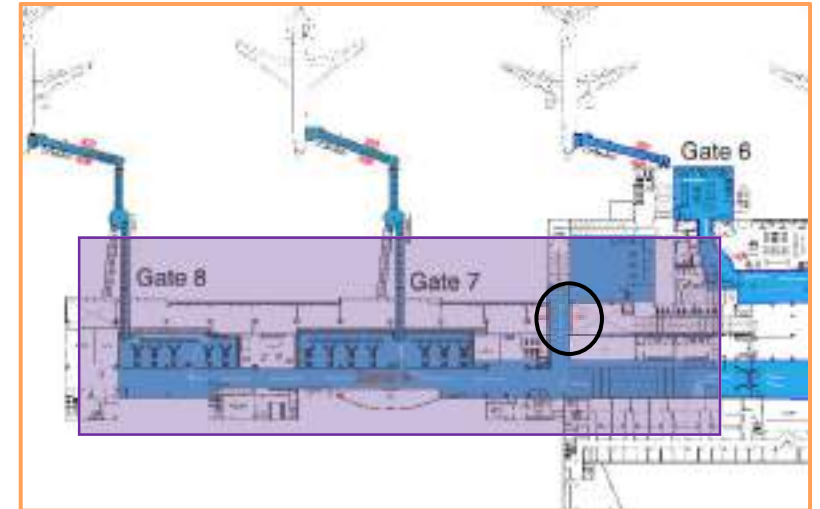
**NETWORK**  
 Package Rate\*

\*Max. 1 month booking permitted

# DEPARTURE JOURNEY TOWARDS GATE 6



**SITE LOCATION: ZONE 6**  
 FIRST FLOOR: Passengers at Departure Corridor 6,7 & 8 seating area and holding gates 20-29



## SITE DATA

**Media**  
 Fabric frame with print

**Size**  
 654(W) X 187(H) cms.

**Displays**  
 1

## RATES

**NETWORK**  
 Package Rate\*

\*Max. 1 month booking permitted



THANK YOU

